

Product datasheet for **TA341198**

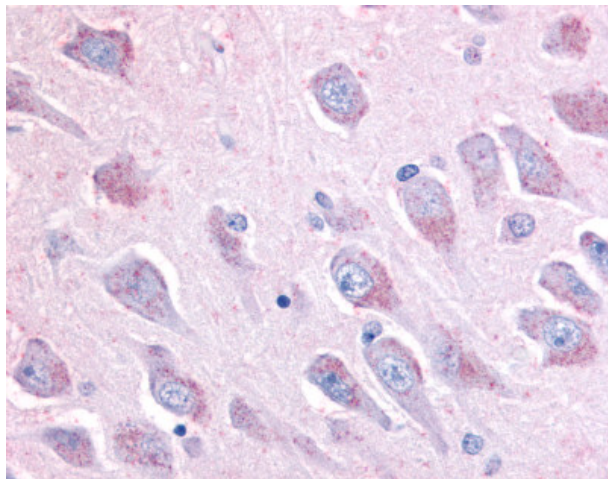
LINGO1 Rabbit Polyclonal Antibody

Product data:

Product Type:	Primary Antibodies
Applications:	IHC
Recommended Dilution:	IHC-P (5 µg/ml)
Reactivity:	Human (Predicted: Bat, Horse, Xenopus)
Host:	Rabbit
Clonality:	Polyclonal
Immunogen:	LINGO1 antibody was raised against synthetic 16 amino acid peptide from C-terminus of human LINGO1. Percent identity with other species by BLAST analysis: Human, Gorilla, Orangutan, Monkey, Marmoset, Mouse, Rat, Elephant, Panda, Bovine, Pig, Opossum, Turkey, Chicken (100%); Bat, Horse, Xenopus (94%); Dog (88%); Rabbit (81%).
Formulation:	PBS, 0.1% sodium azide.
Concentration:	lot specific
Purification:	Immunoaffinity purified
Conjugation:	Unconjugated
Storage:	Store at -20°C as received.
Stability:	Stable for 12 months from date of receipt.
Gene Name:	leucine rich repeat and Ig domain containing 1
Database Link:	NP_116197 Entrez Gene 84894 Human Q96FE5
Synonyms:	LERN1; LRRN6A; UNQ201
Protein Families:	Druggable Genome, Transmembrane



[View online »](#)

Product images:

Anti-LINGO1 antibody IHC of human brain, hippocampus. Immunohistochemistry of formalin-fixed, paraffin-embedded tissue after heat-induced antigen retrieval.