

## Product datasheet for **TA341197**

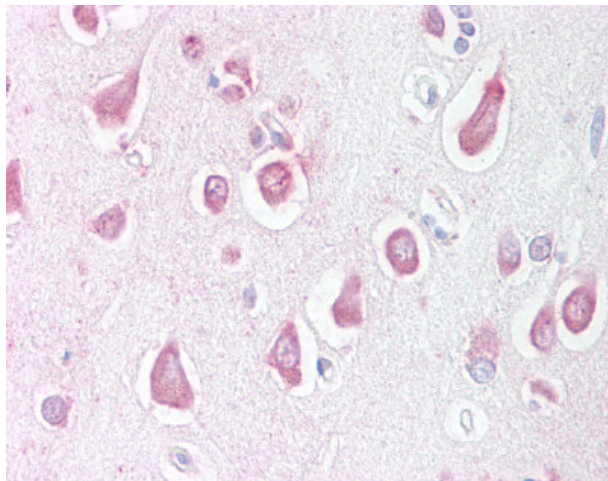
### LINGO1 Rabbit Polyclonal Antibody

#### Product data:

Product Type:	Primary Antibodies
Applications:	IHC
Recommended Dilution:	IHC-P (20 µg/ml)
Reactivity:	Human (Predicted: Bat, Chicken)
Host:	Rabbit
Clonality:	Polyclonal
Immunogen:	LINGO1 antibody was raised against synthetic 17 amino acid peptide from internal region of human LINGO1. Percent identity with other species by BLAST analysis: Human, Gorilla, Orangutan, Monkey, Marmoset, Mouse, Rat, Elephant, Panda, Bovine, Dog, Horse, Rabbit, Pig, Stickleback, Zebrafish (100%); Bat, Opossum, Turkey, Chicken, Pufferfish (94%); Xenopus (82%).
Formulation:	PBS, 0.1% sodium azide.
Concentration:	lot specific
Purification:	Immunoaffinity purified
Conjugation:	Unconjugated
Storage:	Store at -20°C as received.
Stability:	Stable for 12 months from date of receipt.
Gene Name:	leucine rich repeat and Ig domain containing 1
Database Link:	<a href="#">NP_116197</a> <a href="#">Entrez Gene 84894 Human</a> <a href="#">Q96FE5</a>
Synonyms:	LERN1; LRRN6A; UNQ201
Protein Families:	Druggable Genome, Transmembrane



[View online »](#)

**Product images:**

Anti-LINGO1 antibody IHC of human brain, cortex. Immunohistochemistry of formalin-fixed, paraffin-embedded tissue after heat-induced antigen retrieval.