

## Product datasheet for **TA341196**

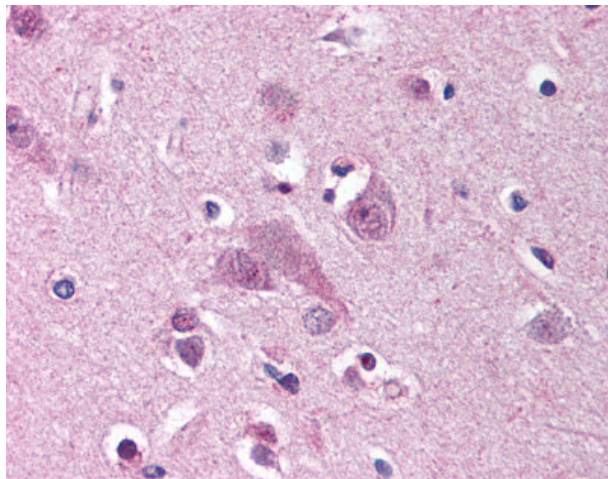
### MARK1 Rabbit Polyclonal Antibody

#### Product data:

Product Type:	Primary Antibodies
Applications:	IHC
Recommended Dilution:	IHC-P (2.5 µg/ml)
Reactivity:	Human (Predicted: Bovine, Dog)
Host:	Rabbit
Clonality:	Polyclonal
Immunogen:	MARK1 / MARK antibody was raised against synthetic 19 amino acid peptide from N-terminus of human MARK1. Percent identity with other species by BLAST analysis: Human, Gibbon, Monkey, Marmoset, Horse, Rabbit (100%); Dog, Bovine, Panda (95%); Rat, Hamster, Elephant, Platypus (89%); Mouse, Opossum, Turkey, Chicken, Lizard (84%).
Formulation:	PBS, 0.1% sodium azide.
Concentration:	lot specific
Purification:	Immunoaffinity purified
Conjugation:	Unconjugated
Storage:	Store at -20°C as received.
Stability:	Stable for 12 months from date of receipt.
Gene Name:	microtubule affinity regulating kinase 1
Database Link:	<a href="#">NP_001273053</a> <a href="#">Entrez Gene 478965 Dog</a> <a href="#">Entrez Gene 4139 Human</a> <a href="#">Q9POL2</a>
Synonyms:	MARK; Par-1c; Par1c
Protein Families:	Druggable Genome, Protein Kinase



[View online »](#)

**Product images:**

Anti-MARK1 antibody IHC of human brain, cortex. Immunohistochemistry of formalin-fixed, paraffin-embedded tissue after heat-induced antigen retrieval.