

## Product datasheet for **TA341195**

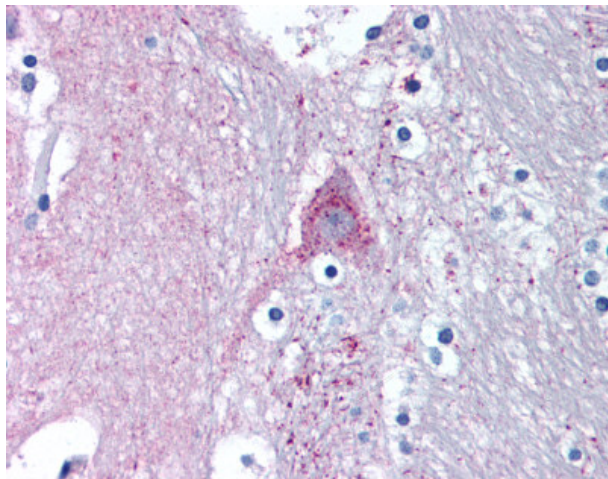
### MARK1 Rabbit Polyclonal Antibody

#### Product data:

Product Type:	Primary Antibodies
Applications:	IHC
Recommended Dilution:	IHC-P (5 µg/ml)
Reactivity:	Human (Predicted: Horse)
Host:	Rabbit
Clonality:	Polyclonal
Immunogen:	MARK1 / MARK antibody was raised against synthetic 18 amino acid peptide from N-terminus of human MARK1. Percent identity with other species by BLAST analysis: Human, Gibbon, Monkey, Marmoset, Dog, Bat, Bovine, Panda, Rabbit, Opossum (100%); Elephant, Horse, Lizard (94%); Rat, Turkey, Chicken, Platypus (89%).
Formulation:	PBS, 0.1% sodium azide.
Concentration:	lot specific
Purification:	Immunoaffinity purified
Conjugation:	Unconjugated
Storage:	Store at -20°C as received.
Stability:	Stable for 12 months from date of receipt.
Gene Name:	microtubule affinity regulating kinase 1
Database Link:	<a href="#">NP_001273053</a> <a href="#">Entrez Gene 4139 Human</a> <a href="#">Q9POL2</a>
Synonyms:	MARK; Par-1c; Par1c
Protein Families:	Druggable Genome, Protein Kinase



[View online »](#)

**Product images:**

Anti-MARK1 antibody IHC of human brain, caduate. Immunohistochemistry of formalin-fixed, paraffin-embedded tissue after heat-induced antigen retrieval.