

## Product datasheet for **TA341185**

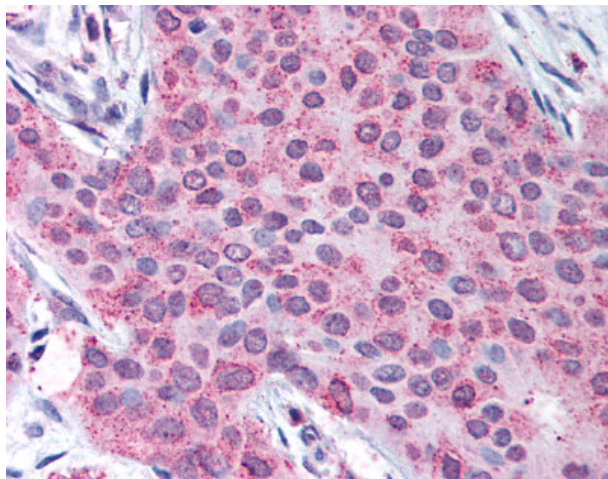
### MMP13 Rabbit Polyclonal Antibody

#### Product data:

Product Type:	Primary Antibodies
Applications:	IHC
Recommended Dilution:	IHC-P (50 µg/ml)
Reactivity:	Human (Predicted: Monkey, Bovine, Dog)
Host:	Rabbit
Clonality:	Polyclonal
Immunogen:	MMP13 antibody was raised against synthetic 17 amino acid peptide from C-terminus of human MMP13. Percent identity with other species by BLAST analysis: Human, Gorilla, Gibbon, Monkey (100%); Marmoset, Dog, Bovine, Elephant (94%); Panda, Horse, Rabbit, Pig (88%); Mouse, Rat, Sheep (82%).
Formulation:	PBS, 0.1% sodium azide.
Concentration:	lot specific
Purification:	Immunoaffinity purified
Conjugation:	Unconjugated
Storage:	Store at -20°C as received.
Stability:	Stable for 12 months from date of receipt.
Gene Name:	matrix metalloproteinase 13
Database Link:	<a href="#">NP_002418</a> <a href="#">Entrez Gene 403763 Dog</a> <a href="#">Entrez Gene 703980 Monkey</a> <a href="#">Entrez Gene 4322 Human</a> <a href="#">P45452</a>
Synonyms:	CLG3; MANDP1; MDST; MMP-13
Protein Families:	Druggable Genome, Protease



[View online »](#)

**Product images:**

Anti-MMP13 antibody IHC of human breast carcinoma. Immunohistochemistry of formalin-fixed, paraffin-embedded tissue after heat-induced antigen retrieval.