

## Product datasheet for **TA341184**

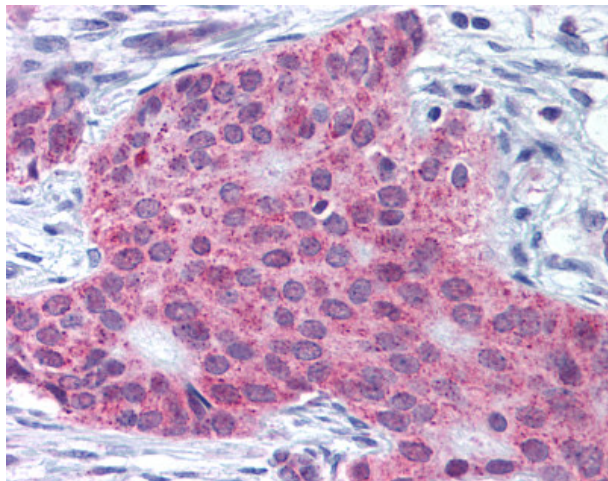
### MMP13 Rabbit Polyclonal Antibody

#### Product data:

|                       |  |
|-----------------------|--|
| Product Type:         | Primary Antibodies   |
| Applications:         | IHC  |
| Recommended Dilution: | IHC-P (5 µg/ml)  |
| Reactivity:           | Human (Predicted: Monkey)  |
| Host:                 | Rabbit   |
| Clonality:            | Polyclonal   |
| Immunogen:            | MMP13 antibody was raised against synthetic 18 amino acid peptide from C-terminus of human MMP13. Percent identity with other species by BLAST analysis: Human, Gorilla (100%); Gibbon, Monkey, Marmoset (94%); Dog, Elephant (89%); Sheep, Bovine, Panda, Horse, Pig (83%). |
| Formulation:          | PBS, 0.1% sodium azide.  |
| Concentration:        | lot specific   |
| Purification:         | Immunoaffinity purified  |
| Conjugation:          | Unconjugated   |
| Storage:              | Store at -20°C as received.  |
| Stability:            | Stable for 12 months from date of receipt.   |
| Gene Name:            | matrix metalloproteinase 13  |
| Database Link:        | <a href="#">NP_002418</a><br><a href="#">Entrez Gene 703980 Monkey</a> <a href="#">Entrez Gene 4322 Human</a><br><a href="#">P45452</a>  |
| Synonyms:             | CLG3; MANDP1; MDST; MMP-13   |
| Protein Families:     | Druggable Genome, Protease   |



[View online »](#)

**Product images:**

Anti-MMP13 antibody IHC of human breast carcinoma. Immunohistochemistry of formalin-fixed, paraffin-embedded tissue after heat-induced antigen retrieval.