

Product datasheet for **TA341183**

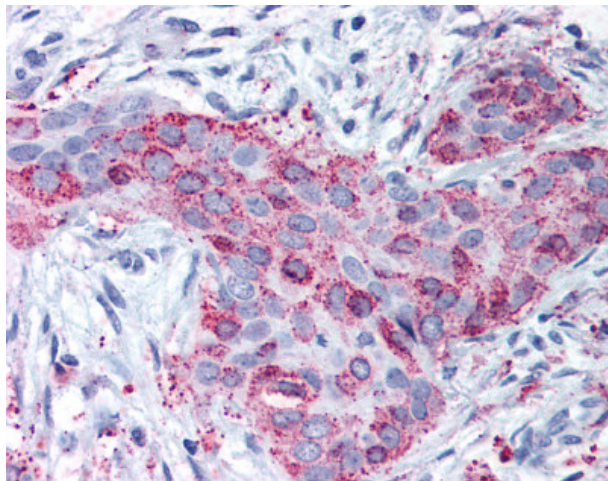
MMP13 Rabbit Polyclonal Antibody

Product data:

Product Type:	Primary Antibodies
Applications:	IHC
Recommended Dilution:	IHC-P (15 - 25 µg/ml)
Reactivity:	Human (Predicted: Mouse, Rat, Dog, Hamster, Sheep)
Host:	Rabbit
Clonality:	Polyclonal
Immunogen:	MMP13 antibody was raised against synthetic 18 amino acid peptide from internal region of human MMP13. Percent identity with other species by BLAST analysis: Human, Gorilla, Gibbon, Monkey, Marmoset, Elephant, Panda, Horse, Rabbit, Pig (100%); Mouse, Rat, Sheep, Dog, Hamster (94%); Bovine, Opossum, Turkey (89%); Chicken (83%).
Formulation:	PBS, 0.1% sodium azide.
Concentration:	lot specific
Purification:	Immunoaffinity purified
Conjugation:	Unconjugated
Storage:	Store at -20°C as received.
Stability:	Stable for 12 months from date of receipt.
Gene Name:	matrix metalloproteinase 13
Database Link:	NP_002418 Entrez Gene 17386 Mouse Entrez Gene 171052 Rat Entrez Gene 403763 Dog Entrez Gene 4322 Human P45452
Synonyms:	CLG3; MANDP1; MDST; MMP-13
Protein Families:	Druggable Genome, Protease



[View online »](#)

Product images:

Anti-MMP13 antibody IHC of human breast carcinoma. Immunohistochemistry of formalin-fixed, paraffin-embedded tissue after heat-induced antigen retrieval.