

Product datasheet for **TA341181**

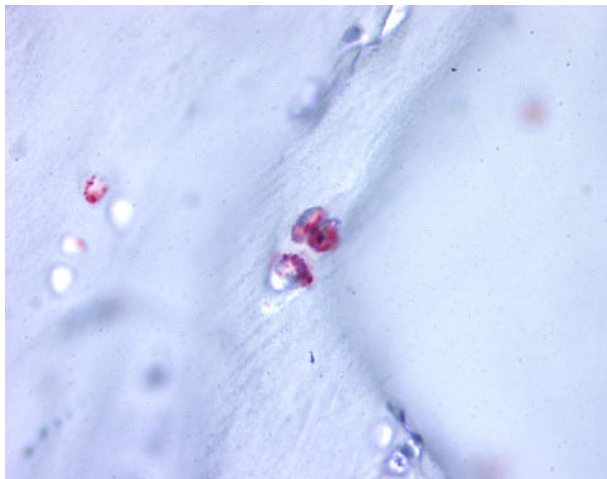
Aggrecan (ACAN) Rabbit Polyclonal Antibody

Product data:

Product Type:	Primary Antibodies
Applications:	IHC
Recommended Dilution:	IHC-P (10 µg/ml)
Reactivity:	Human (Predicted: Mouse)
Host:	Rabbit
Clonality:	Polyclonal
Immunogen:	Aggrecan antibody was raised against synthetic 16 amino acid peptide from C-terminus of human ACAN / Aggrecan. Percent identity with other species by BLAST analysis: Human, Gorilla, Monkey, Marmoset, Rat, Hamster (100%); Mouse (94%); Horse, Opossum, Platypus (88%); Bovine, Dog, Bat, Panda, Pig (81%).
Formulation:	PBS, 0.1% sodium azide.
Concentration:	lot specific
Purification:	Immunoaffinity purified
Conjugation:	Unconjugated
Storage:	Store at -20°C as received.
Stability:	Stable for 12 months from date of receipt.
Gene Name:	aggrecan
Database Link:	NP_001126 Entrez Gene 11595 Mouse Entrez Gene 176 Human P16112
Synonyms:	AGC1; AGCAN; CSPG1; CSPGCP; MSK16; SEDK



[View online »](#)

Product images:

Anti-ACAN / Aggrecan antibody IHC of human cartilage. Immunohistochemistry of formalin-fixed, paraffin-embedded tissue after heat-induced antigen retrieval.