

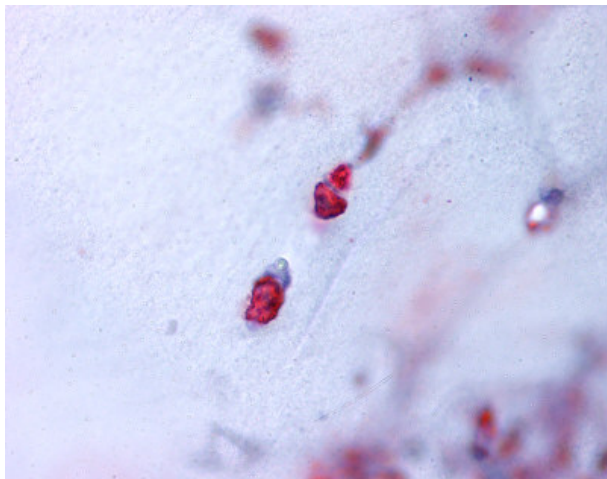
Product datasheet for **TA341177**

Aggrecan (ACAN) Rabbit Polyclonal Antibody

Product data:

Product Type:	Primary Antibodies
Applications:	IHC
Recommended Dilution:	IHC-P (7 µg/ml)
Reactivity:	Human (Predicted: Mouse, Rat, Bovine, Horse)
Host:	Rabbit
Clonality:	Polyclonal
Immunogen:	Aggrecan antibody was raised against synthetic 18 amino acid peptide from N-terminus of human ACAN / Aggrecan. Percent identity with other species by BLAST analysis: Human, Gorilla, Monkey, Marmoset, Hamster, Pig (100%); Mouse, Rat, Bovine, Panda, Horse (94%); Dog, Elephant (89%); Bat (83%).
Formulation:	PBS, 0.1% sodium azide.
Concentration:	lot specific
Purification:	Immunoaffinity purified
Conjugation:	Unconjugated
Storage:	Store at -20°C as received.
Stability:	Stable for 12 months from date of receipt.
Gene Name:	aggrecan
Database Link:	NP_001126 Entrez Gene 11595 Mouse Entrez Gene 58968 Rat Entrez Gene 176 Human P16112
Synonyms:	AGC1; AGCAN; CSPG1; CSPGCP; MSK16; SEDK

[View online »](#)

Product images:

Anti-ACAN / Aggrecan antibody IHC of human bone, cartilage. Immunohistochemistry of formalin-fixed, paraffin-embedded tissue after heat-induced antigen retrieval.