

## Product datasheet for **TA341175**

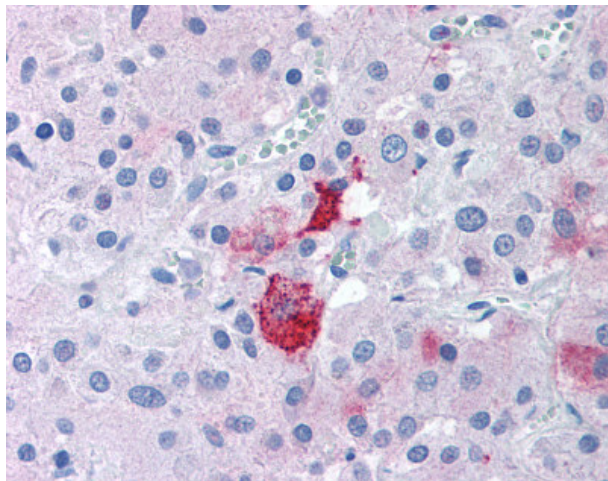
### EPHX2 Rabbit Polyclonal Antibody

#### Product data:

Product Type:	Primary Antibodies
Applications:	IHC
Recommended Dilution:	IHC-P (5 µg/ml)
Reactivity:	Human
Host:	Rabbit
Clonality:	Polyclonal
Immunogen:	SEH / EPHX2 antibody was raised against synthetic 19 amino acid peptide from Near the N-terminus of human EPHX2. Percent identity with other species by BLAST analysis: Human (100%); Gorilla, Orangutan (95%); Gibbon, Monkey (89%); Marmoset (84%).
Formulation:	PBS, 0.1% sodium azide.
Concentration:	lot specific
Purification:	Immunoaffinity purified
Conjugation:	Unconjugated
Storage:	Store at -20°C as received.
Stability:	Stable for 12 months from date of receipt.
Gene Name:	epoxide hydrolase 2
Database Link:	<a href="#">NP_001970</a> <a href="#">Entrez Gene 2053 Human</a> <a href="#">P34913</a>
Synonyms:	CEH; SEH
Protein Pathways:	Arachidonic acid metabolism, Metabolic pathways



[View online »](#)

**Product images:**

Anti-EPHX2 antibody IHC of human adrenal. Immunohistochemistry of formalin-fixed, paraffin-embedded tissue after heat-induced antigen retrieval.