

## Product datasheet for **TA341174**

### EPHX2

#### Product data:

Product Type:	Primary Antibodies
Applications:	IHC
Recommended Dilution:	IHC IHC-P (10 - 20 µg/ml)
Reactivity:	Human
Host:	Rabbit
Clonality:	Polyclonal
Immunogen:	Synthetic 18 amino acid peptide from internal region of human EPHX2. Percent identity with other species by BLAST analysis: Human, Gorilla (100%); Gibbon (94%); Monkey (83%).
Specificity:	Human EPHX2. BLAST analysis of the peptide immunogen showed no homology with other human proteins, except RHOBTB2 (44%), RHOBTB1 (44%).
Formulation:	PBS, 0.1% Sodium Azide
Concentration:	lot specific
Purification:	Immunoaffinity purified
Conjugation:	Unconjugated
Storage:	Aliquot and store undiluted at -20°C or below for up to 1 year. Can be stored undiluted at 4°C for up to 1 month. Avoid freeze-thaw cycles.
Stability:	12 months from date of despatch
Gene Name:	epoxide hydrolase 2
Database Link:	<a href="#">NP_001970</a> <a href="#">Entrez Gene 2053 Human P34913</a>
Background:	Epoxide Hydrolase 2 antibody TA341174 is an unconjugated rabbit polyclonal antibody to human Epoxide Hydrolase 2 (EPHX2) (Internal). Validated for IHC. Tested on 20 paraffin-embedded human tissues.
Synonyms:	EPHX2, CEH, Epoxide hydratase, Epoxide hydrolase, soluble, Epoxide hydrolase 2, cytosolic, SEH, Soluble epoxide hydrolase

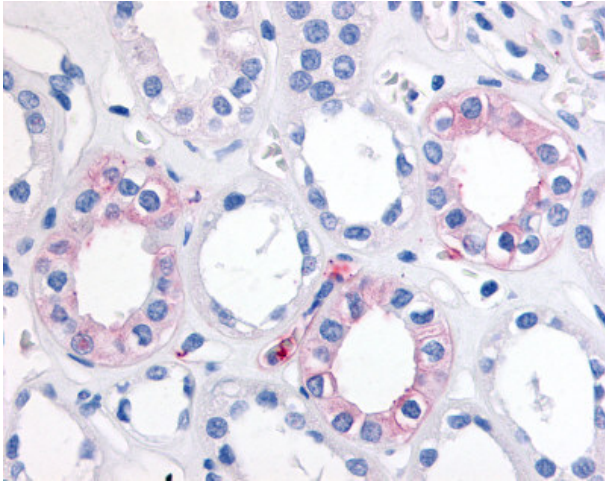


[View online »](#)

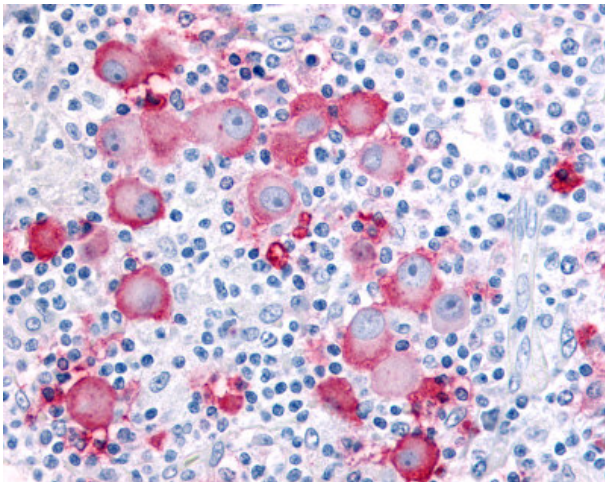
**Note:** Immunohistochemistry: The unconjugated form was validated for use in immunohistochemistry on a panel of 21 formalin-fixed, paraffin-embedded (FFPE) human tissues after heat induced antigen retrieval in pH 6.0 citrate buffer. After incubation with the primary antibody, slides were incubated with biotinylated secondary antibody, followed by alkaline phosphatase-streptavidin and chromogen. The stained slides were evaluated by a pathologist to confirm staining specificity. The optimal working concentration for the unconjugated form was determined to be 20 ug/ml.

**Protein Pathways:** Arachidonic acid metabolism, Metabolic pathways

**Product images:**



Anti-EPHX2 antibody IHC of human kidney. Immunohistochemistry of formalin-fixed, paraffin-embedded tissue after heat-induced antigen retrieval.



Anti-SEH / EPHX2 antibody IHC of human Skin, Melanoma. Immunohistochemistry of formalin-fixed, paraffin-embedded tissue after heat-induced antigen retrieval.