

Product datasheet for **TA341171**

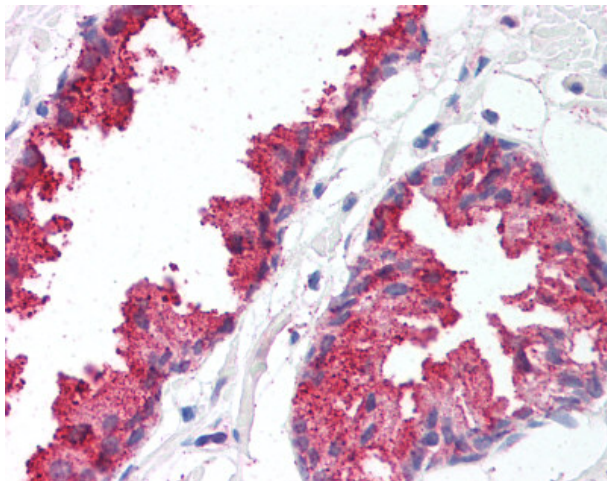
BACE1 Rabbit Polyclonal Antibody

Product data:

Product Type:	Primary Antibodies
Applications:	IHC
Recommended Dilution:	IHC-P (5 µg/ml)
Reactivity:	Human (Predicted: Mouse, Rat, Bat, Bovine, Dog, Hamster, Horse, Pig, Rabbit, Guinea Pig)
Host:	Rabbit
Clonality:	Polyclonal
Immunogen:	BACE1 / BACE antibody was raised against synthetic 18 amino acid peptide from C-terminus of human BACE1. Percent identity with other species by BLAST analysis: Human, Gorilla, Gibbon, Monkey, Marmoset (100%); Mouse, Rat, Dog, Bat, Bovine, Hamster, Elephant, Panda, Horse, Rabbit, Pig, Guinea pig (94%); Opossum (89%); Turkey, Chicken, Platypus (83%).
Formulation:	PBS, 0.1% sodium azide.
Concentration:	lot specific
Purification:	Immunoaffinity purified
Conjugation:	Unconjugated
Storage:	Store at -20°C as received.
Stability:	Stable for 12 months from date of receipt.
Gene Name:	beta-secretase 1
Database Link:	NP_036236 Entrez Gene 23821 Mouse Entrez Gene 29392 Rat Entrez Gene 489390 Dog Entrez Gene 23621 Human P56817
Synonyms:	ASP2; BACE; HSPC104
Protein Families:	Druggable Genome, Protease, Transmembrane
Protein Pathways:	Alzheimer's disease



[View online »](#)

Product images:

Anti-BACE1 antibody IHC of human prostate. Immunohistochemistry of formalin-fixed, paraffin-embedded tissue after heat-induced antigen retrieval.