

Product datasheet for **TA341169**

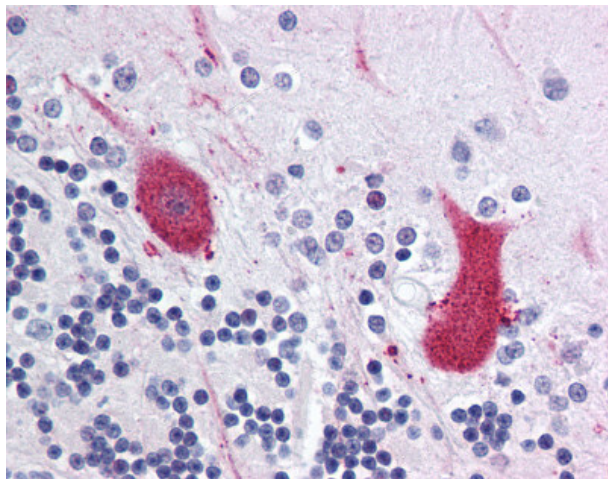
MARK1 Rabbit Polyclonal Antibody

Product data:

Product Type:	Primary Antibodies
Applications:	IHC
Recommended Dilution:	IHC-P (2.5 µg/ml)
Reactivity:	Human (Predicted: Rat, Bovine, Dog, Horse)
Host:	Rabbit
Clonality:	Polyclonal
Immunogen:	MARK1 / MARK antibody was raised against synthetic 17 amino acid peptide from internal region of human MARK1. Percent identity with other species by BLAST analysis: Human, Gibbon, Monkey, Marmoset, Bat, Rabbit (100%); Rat, Panda, Dog, Bovine, Horse (94%); Mouse (88%); Platypus, Lizard (82%).
Formulation:	PBS, 0.1% sodium azide.
Concentration:	lot specific
Purification:	Immunoaffinity purified
Conjugation:	Unconjugated
Storage:	Store at -20°C as received.
Stability:	Stable for 12 months from date of receipt.
Gene Name:	microtubule affinity regulating kinase 1
Database Link:	NP_001273053 Entrez Gene 117016 Rat Entrez Gene 478965 Dog Entrez Gene 4139 Human Q9P0L2
Synonyms:	MARK; Par-1c; Par1c
Protein Families:	Druggable Genome, Protein Kinase



[View online »](#)

Product images:

Anti-MARK1 antibody IHC of human brain, cerebellum. Immunohistochemistry of formalin-fixed, paraffin-embedded tissue after heat-induced antigen retrieval.