

## Product datasheet for **TA341167**

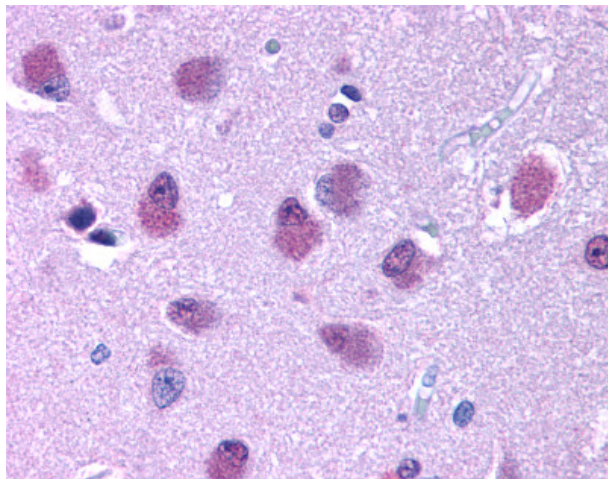
### Bombesin Receptor 3 (BRS3) Rabbit Polyclonal Antibody

#### Product data:

Product Type:	Primary Antibodies
Applications:	IHC
Recommended Dilution:	IHC-P (10 µg/ml)
Reactivity:	Human (Predicted: Monkey, Rabbit, Sheep)
Host:	Rabbit
Clonality:	Polyclonal
Immunogen:	BRS3 / BRS-3 antibody was raised against synthetic 20 amino acid peptide from 3rd cytoplasmic domain of human BRS3. Percent identity with other species by BLAST analysis: Human, Gorilla, Gibbon, Mouse, Rat, Bovine, Dog, Hamster, Panda, Horse, Guinea pig (100%); Monkey, Marmoset, Sheep, Elephant, Rabbit (95%); Bat (85%).
Formulation:	PBS, 0.1% sodium azide.
Concentration:	lot specific
Purification:	Immunoaffinity purified
Conjugation:	Unconjugated
Storage:	Store at -20°C as received.
Stability:	Stable for 12 months from date of receipt.
Gene Name:	bombesin like receptor 3
Database Link:	<a href="#">NP_001718</a> <a href="#">Entrez Gene 574261 Monkey</a> <a href="#">Entrez Gene 680 Human</a> <a href="#">P32247</a>
Synonyms:	BB3; BB3R
Protein Families:	Druggable Genome, GPCR, Transmembrane
Protein Pathways:	Neuroactive ligand-receptor interaction



[View online »](#)

**Product images:**

Anti-BRS3 antibody IHC of human brain.  
Immunohistochemistry of formalin-fixed,  
paraffin-embedded tissue after heat-induced  
antigen retrieval.