

Product datasheet for **TA341163**

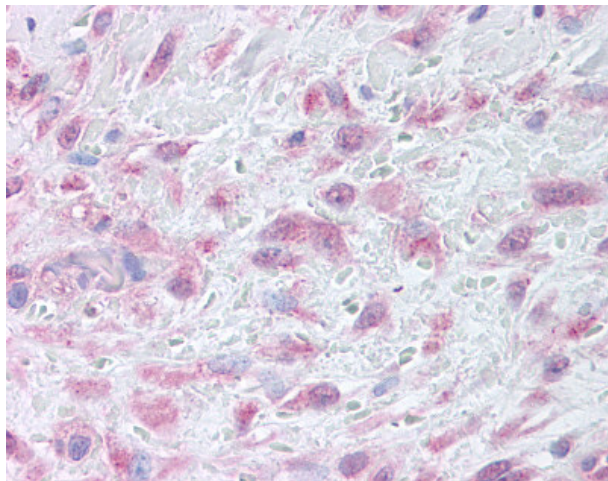
MMP9 Rabbit Polyclonal Antibody

Product data:

Product Type:	Primary Antibodies
Applications:	IHC
Recommended Dilution:	IHC-P (10 µg/ml)
Reactivity:	Human (Predicted: Monkey, Dog, Hamster, Rabbit)
Host:	Rabbit
Clonality:	Polyclonal
Immunogen:	MMP9 / Gelatinase B antibody was raised against synthetic 12 amino acid peptide from internal region of human MMP9. Percent identity with other species by BLAST analysis: Human, Gorilla, Gibbon, Marmoset, Bovine (100%); Monkey, Dog, Hamster, Rabbit (92%); Mouse, Panda, Horse, Pig, Chicken (83%).
Formulation:	PBS, 0.1% sodium azide.
Concentration:	lot specific
Purification:	Immunoaffinity purified
Conjugation:	Unconjugated
Storage:	Store at -20°C as received.
Stability:	Stable for 12 months from date of receipt.
Gene Name:	matrix metalloproteinase 9
Database Link:	NP_004985 Entrez Gene 403885 Dog Entrez Gene 708084 Monkey Entrez Gene 4318 Human P14780
Synonyms:	CLG4B; GELB; MANDP2; MMP-9
Protein Families:	Druggable Genome, Protease
Protein Pathways:	Bladder cancer, Leukocyte transendothelial migration, Pathways in cancer



[View online »](#)

Product images:

Anti-MMP9 antibody IHC of human skin, granulation tissue. Immunohistochemistry of formalin-fixed, paraffin-embedded tissue after heat-induced antigen retrieval.