

## Product datasheet for **TA341162**

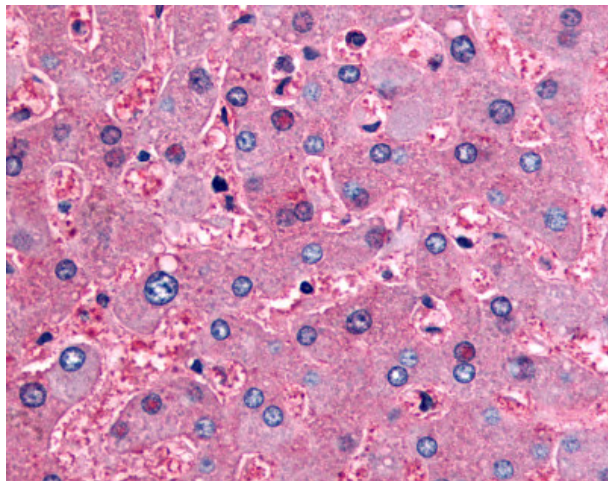
### DPP9 Rabbit Polyclonal Antibody

#### Product data:

Product Type:	Primary Antibodies
Applications:	IHC
Recommended Dilution:	IHC-P (10 µg/ml)
Reactivity:	Human (Predicted: Hamster)
Host:	Rabbit
Clonality:	Polyclonal
Immunogen:	DPP9 antibody was raised against synthetic 16 amino acid peptide from internal region of human DPP9. Percent identity with other species by BLAST analysis: Human, Gibbon, Marmoset, Mouse, Bovine, Dog, Horse (100%); Hamster, Panda (94%); Bat, Elephant, Turkey, Chicken (88%); Gorilla, Opossum (81%).
Formulation:	PBS, 0.1% sodium azide.
Concentration:	lot specific
Purification:	Immunoaffinity purified
Conjugation:	Unconjugated
Storage:	Store at -20°C as received.
Stability:	Stable for 12 months from date of receipt.
Gene Name:	dipeptidyl peptidase 9
Database Link:	<a href="#">NP_631898</a> <a href="#">Entrez Gene 91039 Human</a> <a href="#">Q86TI2</a>
Synonyms:	DP9; DPLP9; DPRP-2; DPRP2
Protein Families:	Druggable Genome, Protease



[View online »](#)

**Product images:**

Anti-DPP9 antibody IHC of human liver.  
Immunohistochemistry of formalin-fixed,  
paraffin-embedded tissue after heat-induced  
antigen retrieval.