

## Product datasheet for **TA341160**

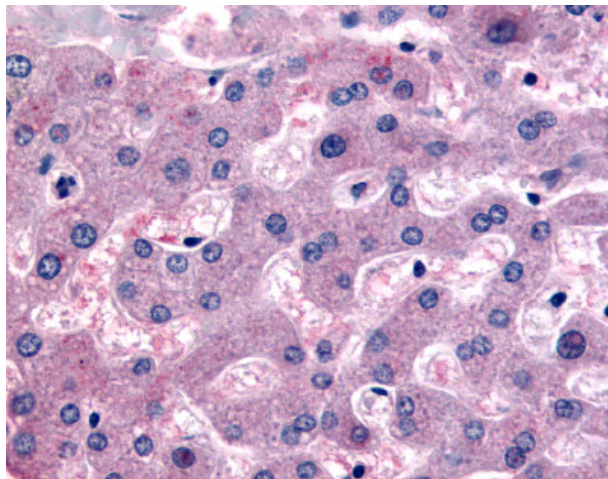
### DPP9 Rabbit Polyclonal Antibody

#### Product data:

|                       |   |
|-----------------------|---|
| Product Type:         | Primary Antibodies  |
| Applications:         | IHC   |
| Recommended Dilution: | IHC-P (10 µg/ml)  |
| Reactivity:           | Human (Predicted: Monkey, Bat, Bovine)  |
| Host:                 | Rabbit  |
| Clonality:            | Polyclonal  |
| Immunogen:            | DPP9 antibody was raised against synthetic 14 amino acid peptide from internal region of human DPP9. Percent identity with other species by BLAST analysis: Human, Gorilla, Monkey, Mouse, Hamster (100%); Marmoset, Elephant, Bovine, Bat (93%); Panda, Horse (86%). |
| Formulation:          | PBS, 0.1% sodium azide.   |
| Concentration:        | lot specific  |
| Purification:         | Immunoaffinity purified   |
| Conjugation:          | Unconjugated  |
| Storage:              | Store at -20°C as received.   |
| Stability:            | Stable for 12 months from date of receipt.  |
| Gene Name:            | dipeptidyl peptidase 9  |
| Database Link:        | <a href="#">NP_631898</a><br><a href="#">Entrez Gene 695587 Monkey</a> <a href="#">Entrez Gene 91039 Human</a><br><a href="#">Q86T12</a>  |
| Synonyms:             | DP9; DPLP9; DPRP-2; DPRP2   |
| Protein Families:     | Druggable Genome, Protease  |



[View online »](#)

**Product images:**

Anti-DPP9 antibody IHC of human liver.  
Immunohistochemistry of formalin-fixed,  
paraffin-embedded tissue after heat-induced  
antigen retrieval.