

Product datasheet for **TA341158**

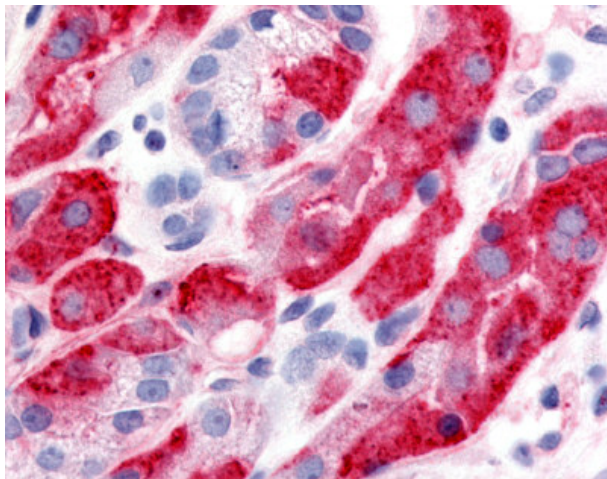
DPP2 (DPP7) Rabbit Polyclonal Antibody

Product data:

| | |
|-----------------------|--|
| Product Type: | Primary Antibodies |
| Applications: | IHC |
| Recommended Dilution: | IHC-P (10 µg/ml) |
| Reactivity: | Human (Predicted: Monkey) |
| Host: | Rabbit |
| Clonality: | Polyclonal |
| Immunogen: | DPP2 / DPP7 antibody was raised against synthetic 18 amino acid peptide from extracellular domain of human DPP7 / DPP2. Percent identity with other species by BLAST analysis: Human, Orangutan, Gibbon (100%); Gorilla, Monkey (94%). |
| Formulation: | PBS, 0.1% sodium azide. |
| Concentration: | lot specific |
| Purification: | Immunoaffinity purified |
| Conjugation: | Unconjugated |
| Storage: | Store at -20°C as received. |
| Stability: | Stable for 12 months from date of receipt. |
| Gene Name: | dipeptidyl peptidase 7 |
| Database Link: | NP_037511 Entrez Gene 721595 Monkey Entrez Gene 29952 Human Q9UHL4 |
| Synonyms: | DPP2; DPPII; QPP |
| Protein Families: | Protease |



[View online »](#)

Product images:

Anti-DPP7 / DPP2 antibody IHC of human stomach. Immunohistochemistry of formalin-fixed, paraffin-embedded tissue after heat-induced antigen retrieval.