

Product datasheet for **TA341157**

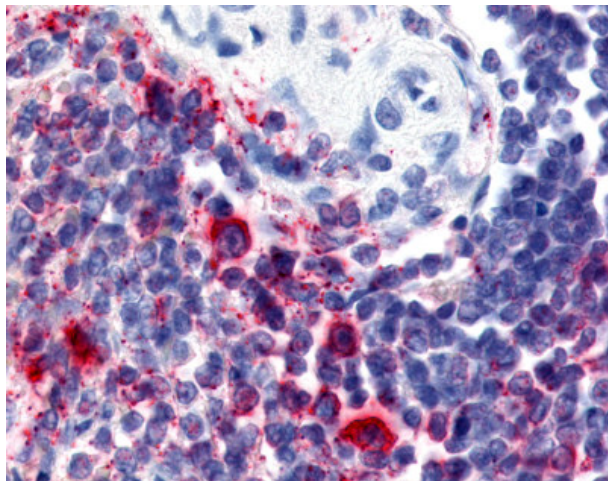
Attractin (ATRN) Rabbit Polyclonal Antibody

Product data:

Product Type:	Primary Antibodies
Applications:	IHC
Recommended Dilution:	IHC-P (10 µg/ml)
Reactivity:	Human (Predicted: Monkey, Mouse, Rat, Dog, Hamster, Rabbit)
Host:	Rabbit
Clonality:	Polyclonal
Immunogen:	ATRN / Attractin antibody was raised against synthetic 15 amino acid peptide from internal region of human ATRN / Attractin. Percent identity with other species by BLAST analysis: Human, Gibbon (100%); Monkey, Marmoset, Mouse, Rat, Dog, Hamster, Rabbit (93%); Gorilla, Bovine, Panda (87%); Bat, Pig (80%).
Formulation:	PBS, 0.1% sodium azide.
Concentration:	lot specific
Purification:	Immunoaffinity purified
Conjugation:	Unconjugated
Storage:	Store at -20°C as received.
Stability:	Stable for 12 months from date of receipt.
Gene Name:	attractin
Database Link:	NP_647538 Entrez Gene 11990 Mouse Entrez Gene 83526 Rat Entrez Gene 477170 Dog Entrez Gene 717374 Monkey Entrez Gene 8455 Human O75882
Synonyms:	DPPT-L; MGCA
Protein Families:	Druggable Genome, Secreted Protein, Transmembrane



[View online »](#)

Product images:

Anti-ATRN / Attractin antibody IHC of human spleen. Immunohistochemistry of formalin-fixed, paraffin-embedded tissue after heat-induced antigen retrieval.