

Product datasheet for **TA341156**

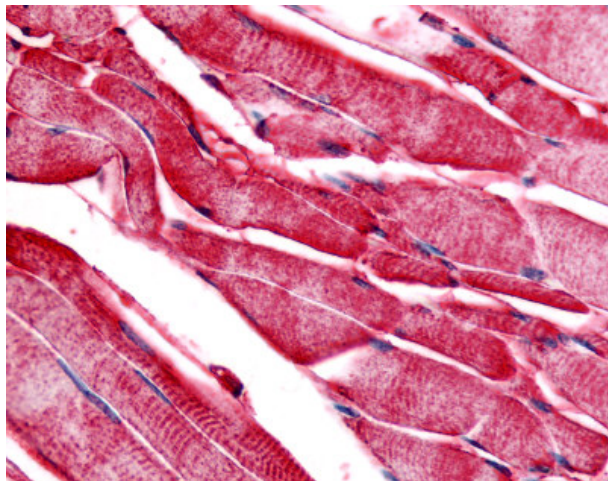
PYGM Rabbit Polyclonal Antibody

Product data:

Product Type:	Primary Antibodies
Applications:	IHC
Recommended Dilution:	IHC-P (20 µg/ml)
Reactivity:	Human (Predicted: Monkey, Mouse, Rat, Hamster, Pig, Rabbit)
Host:	Rabbit
Clonality:	Polyclonal
Immunogen:	PYGM antibody was raised against synthetic 14 amino acid peptide from C-terminus of human PYGM / Phosphorylase b. Percent identity with other species by BLAST analysis: Human, Gorilla, Gibbon, Baboon, Monkey (100%); Galago, Marmoset, Mouse, Rat, Hamster, Rabbit, Pig, Armadillo (93%); Dog, Panda, Horse (86%).
Formulation:	PBS, 0.1% sodium azide.
Concentration:	lot specific
Purification:	Immunoaffinity purified
Conjugation:	Unconjugated
Storage:	Store at -20°C as received.
Stability:	Stable for 12 months from date of receipt.
Gene Name:	phosphorylase, glycogen, muscle
Database Link:	NP_005600 Entrez Gene 19309 Mouse Entrez Gene 24701 Rat Entrez Gene 717451 Monkey Entrez Gene 5837 Human P11217
Synonyms:	glycogen; glycogen phosphorylase; glycogen storage disease type V; glycogen storage disease type V); McArdle syndrome; muscle; muscle (McArdle syndrome; myophosphorylase; phosphorylase
Protein Families:	Druggable Genome
Protein Pathways:	Insulin signaling pathway, Starch and sucrose metabolism



[View online »](#)

Product images:

Anti-PYGM / Phosphorylase b antibody IHC of human skeletal muscle. Immunohistochemistry of formalin-fixed, paraffin-embedded tissue after heat-induced antigen retrieval.