

Product datasheet for **TA341155**

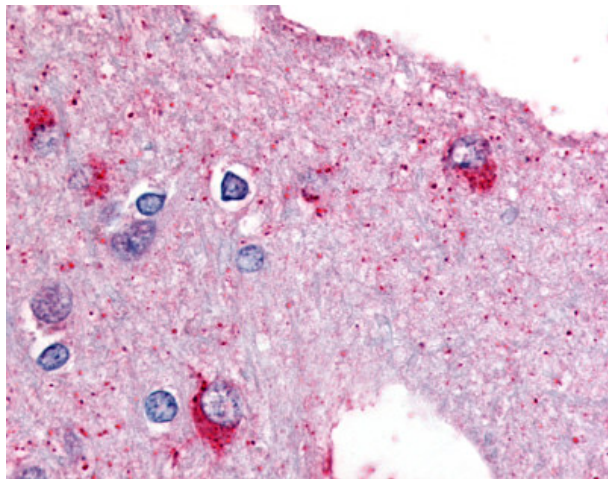
GPBB (PYGB) Rabbit Polyclonal Antibody

Product data:

Product Type:	Primary Antibodies
Applications:	IHC
Recommended Dilution:	IHC-P (10 µg/ml)
Reactivity:	Human
Host:	Rabbit
Clonality:	Polyclonal
Immunogen:	PYGB antibody was raised against synthetic 20 amino acid peptide from internal region of human PYGB. Percent identity with other species by BLAST analysis: Human, Gorilla, Orangutan, Gibbon, Marmoset, Mouse, Rat, Sheep, Bat, Bovine, Hamster, Elephant, Panda, Rabbit, Pig, Turkey, Chicken, Lizard, Xenopus, Salmon, Pufferfish, Zebrafish, Stickleback, Drosophila (100%).
Formulation:	PBS, 0.1% sodium azide.
Concentration:	lot specific
Purification:	Immunoaffinity purified
Conjugation:	Unconjugated
Storage:	Store at -20°C as received.
Stability:	Stable for 12 months from date of receipt.
Gene Name:	phosphorylase, glycogen; brain
Database Link:	NP_002853 Entrez Gene 5834 Human P11216
Synonyms:	GPBB
Protein Families:	Druggable Genome
Protein Pathways:	Insulin signaling pathway, Starch and sucrose metabolism



[View online »](#)

Product images:

Anti-PYGB antibody IHC of human brain.
Immunohistochemistry of formalin-fixed,
paraffin-embedded tissue after heat-induced
antigen retrieval.