

## Product datasheet for **TA341154**

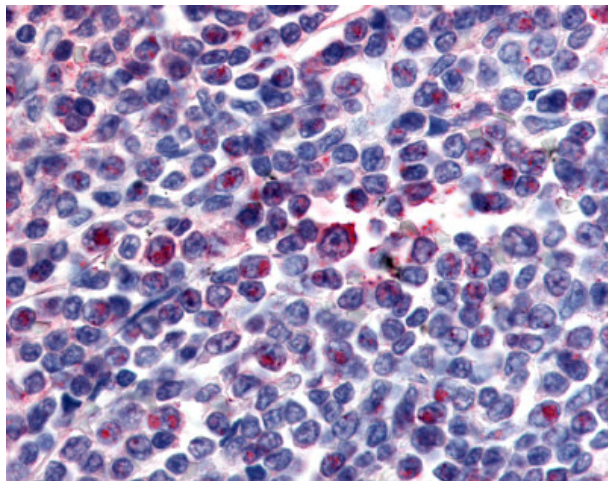
### Attractin (ATRN) Rabbit Polyclonal Antibody

#### Product data:

Product Type:	Primary Antibodies
Applications:	IHC
Recommended Dilution:	IHC-P (20 µg/ml)
Reactivity:	Human (Predicted: Monkey, Rabbit)
Host:	Rabbit
Clonality:	Polyclonal
Immunogen:	ATRN / Attractin antibody was raised against synthetic 17 amino acid peptide from internal region of human ATRN / Attractin. Percent identity with other species by BLAST analysis: Human, Gibbon, Marmoset, Mouse, Rat, Dog, Bat, Hamster, Panda, Pig (100%); Gorilla, Monkey, Rabbit (94%); Elephant (88%); Bovine, Stickleback (82%).
Formulation:	PBS, 0.1% sodium azide.
Concentration:	lot specific
Purification:	Immunoaffinity purified
Conjugation:	Unconjugated
Storage:	Store at -20°C as received.
Stability:	Stable for 12 months from date of receipt.
Gene Name:	attractin
Database Link:	<a href="#">NP_647538</a> <a href="#">Entrez Gene 717374 Monkey</a> <a href="#">Entrez Gene 8455 Human</a> <a href="#">O75882</a>
Synonyms:	DPPT-L; MGCA
Protein Families:	Druggable Genome, Secreted Protein, Transmembrane



[View online »](#)

**Product images:**

Anti-ATRN / Attractin antibody IHC of human spleen. Immunohistochemistry of formalin-fixed, paraffin-embedded tissue after heat-induced antigen retrieval.