

Product datasheet for **TA341153**

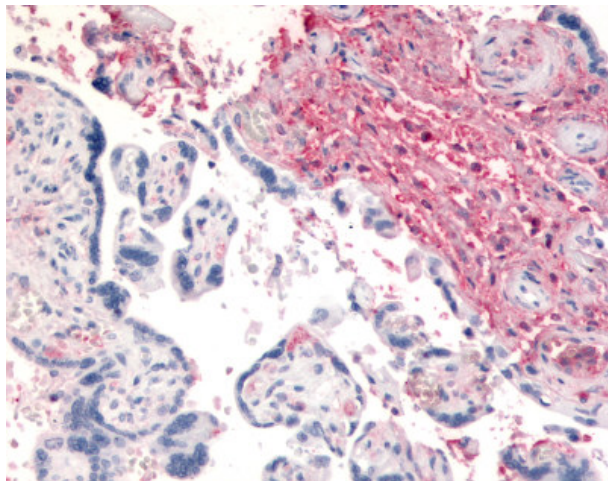
CD26 (DPP4) Rabbit Polyclonal Antibody

Product data:

| | |
|-----------------------|--|
| Product Type: | Primary Antibodies |
| Applications: | IHC |
| Recommended Dilution: | IHC-P (2.5 µg/ml) |
| Reactivity: | Human (Predicted: Monkey, Bovine) |
| Host: | Rabbit |
| Clonality: | Polyclonal |
| Immunogen: | DPP4 / CD26 antibody was raised against synthetic 15 amino acid peptide from N-terminus of human CD26. Percent identity with other species by BLAST analysis: Human, Orangutan, Gibbon, Monkey (100%); Gorilla, Marmoset, Bovine (93%); Cat, Rabbit (87%); Dog, Bat, Elephant, Panda, Horse (80%). |
| Formulation: | PBS, 0.1% sodium azide. |
| Concentration: | lot specific |
| Purification: | Immunoaffinity purified |
| Conjugation: | Unconjugated |
| Storage: | Store at -20°C as received. |
| Stability: | Stable for 12 months from date of receipt. |
| Gene Name: | dipeptidyl peptidase 4 |
| Database Link: | NP_001926 Entrez Gene 654491 Monkey Entrez Gene 1803 Human P27487 |
| Synonyms: | ADABP; ADCP2; CD26; DPPIV; TP103 |
| Protein Families: | Druggable Genome, Protease, Secreted Protein, Transmembrane |



[View online »](#)

Product images:

Anti-CD26 antibody IHC of human placenta. Immunohistochemistry of formalin-fixed, paraffin-embedded tissue after heat-induced antigen retrieval.