

Product datasheet for **TA341152**

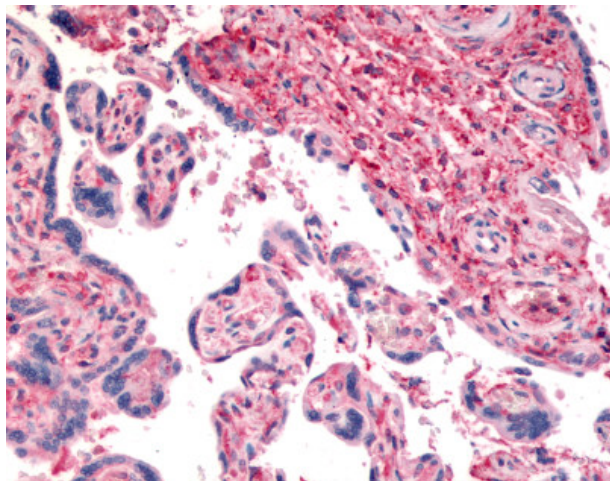
CD26 (DPP4) Rabbit Polyclonal Antibody

Product data:

Product Type:	Primary Antibodies
Applications:	IHC
Recommended Dilution:	IHC-P (1.25 µg/ml)
Reactivity:	Human (Predicted: Bovine, Horse, Pig, Sheep)
Host:	Rabbit
Clonality:	Polyclonal
Immunogen:	DPP4 / CD26 antibody was raised against synthetic 16 amino acid peptide from internal region of human CD26. Percent identity with other species by BLAST analysis: Human, Orangutan, Gibbon, Monkey, Marmoset (100%); Gorilla, Sheep, Elephant, Bovine, Horse, Pig (94%); Rabbit (88%); Bat, Dog, Cat (81%).
Formulation:	PBS, 0.1% sodium azide.
Concentration:	lot specific
Purification:	Immunoaffinity purified
Conjugation:	Unconjugated
Storage:	Store at -20°C as received.
Stability:	Stable for 12 months from date of receipt.
Gene Name:	dipeptidyl peptidase 4
Database Link:	NP_001926 Entrez Gene 1803 Human P27487
Synonyms:	ADABP; ADCP2; CD26; DPPIV; TP103
Protein Families:	Druggable Genome, Protease, Secreted Protein, Transmembrane



[View online »](#)

Product images:

Anti-CD26 antibody IHC of human placenta. Immunohistochemistry of formalin-fixed, paraffin-embedded tissue after heat-induced antigen retrieval.