

## Product datasheet for **TA341151**

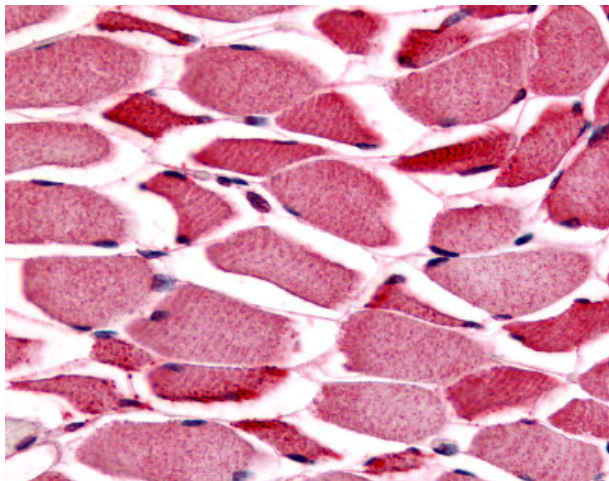
### **PYGM Rabbit Polyclonal Antibody**

#### **Product data:**

<b>Product Type:</b>	Primary Antibodies
<b>Applications:</b>	IHC
<b>Recommended Dilution:</b>	IHC-P (10 µg/ml)
<b>Reactivity:</b>	Human (Predicted: Bat, Pig)
<b>Host:</b>	Rabbit
<b>Clonality:</b>	Polyclonal
<b>Immunogen:</b>	PYGM antibody was raised against synthetic 10 amino acid peptide from internal region of human PYGM / Phosphorylase b. Percent identity with other species by BLAST analysis: Human, Gorilla, Gibbon, Baboon, Monkey, Galago, Marmoset, Mouse, Rat, Sheep, Dog, Bovine, Elephant, Panda, Rabbit, Armadillo (100%); Shrew, Bat, Pig, Platypus (90%); Xenopus, Penicillium (80%).
<b>Formulation:</b>	PBS, 0.1% sodium azide.
<b>Concentration:</b>	lot specific
<b>Purification:</b>	Immunoaffinity purified
<b>Conjugation:</b>	Unconjugated
<b>Storage:</b>	Store at -20°C as received.
<b>Stability:</b>	Stable for 12 months from date of receipt.
<b>Gene Name:</b>	phosphorylase, glycogen, muscle
<b>Database Link:</b>	<a href="#">NP_005600</a> <a href="#">Entrez Gene 5837 Human P11217</a>
<b>Synonyms:</b>	glycogen; glycogen phosphorylase; glycogen storage disease type V; glycogen storage disease type V); McArdle syndrome; muscle; muscle (McArdle syndrome; myophosphorylase; phosphorylase
<b>Protein Families:</b>	Druggable Genome
<b>Protein Pathways:</b>	Insulin signaling pathway, Starch and sucrose metabolism



[View online »](#)

**Product images:**

Anti-PYGM / Phosphorylase b antibody IHC of human skeletal muscle. Immunohistochemistry of formalin-fixed, paraffin-embedded tissue after heat-induced antigen retrieval.