

## Product datasheet for **TA341148**

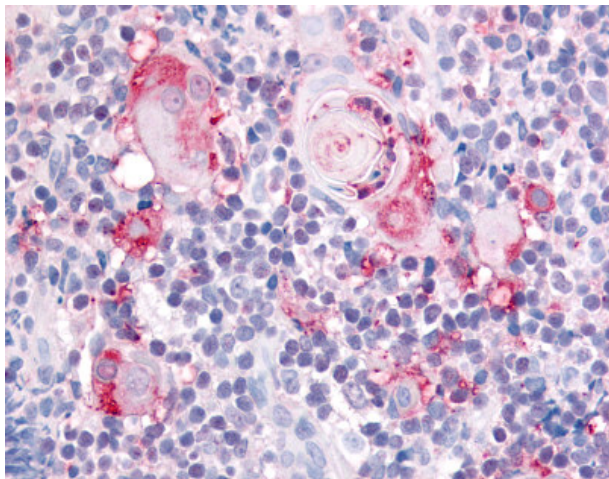
### CD49b (ITGA2) Rabbit Polyclonal Antibody

#### Product data:

Product Type:	Primary Antibodies
Applications:	IHC
Recommended Dilution:	IHC-P (10 µg/ml)
Reactivity:	Human (Predicted: Bovine, Horse, Chicken)
Host:	Rabbit
Clonality:	Polyclonal
Immunogen:	ITGA2 / CD49b antibody was raised against synthetic 16 amino acid peptide from extracellular domain of human ITGA2 / CD49b. Percent identity with other species by BLAST analysis: Human, Gorilla, Gibbon, Monkey, Marmoset, Dog, Panda, Pig (100%); Bovine, Elephant, Horse, Chicken, Lizard (94%); Opossum, Turkey (88%); Bat, Hamster, Stickleback (81%).
Formulation:	PBS, 0.1% sodium azide.
Concentration:	lot specific
Purification:	Immunoaffinity purified
Conjugation:	Unconjugated
Storage:	Store at -20°C as received.
Stability:	Stable for 12 months from date of receipt.
Gene Name:	integrin subunit alpha 2
Database Link:	<a href="#">NP_002194</a> <a href="#">Entrez Gene 3673 Human P17301</a>
Synonyms:	BR; CD49B; GPIa; HPA-5; VLA-2; VLAA2
Protein Families:	Druggable Genome, Transmembrane
Protein Pathways:	Arrhythmogenic right ventricular cardiomyopathy (ARVC), Dilated cardiomyopathy, ECM-receptor interaction, Focal adhesion, Hematopoietic cell lineage, Hypertrophic cardiomyopathy (HCM), Pathways in cancer, Regulation of actin cytoskeleton, Small cell lung cancer



[View online »](#)

**Product images:**

Anti-ITGA2 / CD49b antibody IHC of human thymus, medulla. Immunohistochemistry of formalin-fixed, paraffin-embedded tissue after heat-induced antigen retrieval.