

## Product datasheet for **TA341145**

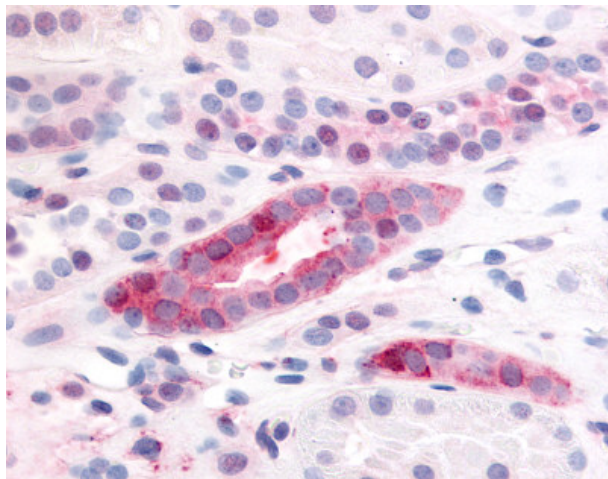
### PDGF Receptor beta (PDGFRB) Rabbit Polyclonal Antibody

#### Product data:

Product Type:	Primary Antibodies
Applications:	IHC
Recommended Dilution:	IHC-P (20 µg/ml)
Reactivity:	Human
Host:	Rabbit
Clonality:	Polyclonal
Immunogen:	PDGFRB / PDGFR Beta antibody was raised against synthetic 16 amino acid peptide from extracellular domain of human PDGFRB. Percent identity with other species by BLAST analysis: Human, Gorilla (100%); Gibbon (94%); Monkey (88%); Marmoset, Elephant (81%).
Formulation:	PBS, 0.1% sodium azide.
Concentration:	lot specific
Purification:	Immunoaffinity purified
Conjugation:	Unconjugated
Storage:	Store at -20°C as received.
Stability:	Stable for 12 months from date of receipt.
Gene Name:	platelet derived growth factor receptor beta
Database Link:	<a href="#">NP_002600</a> <a href="#">Entrez Gene 5159 Human</a> <a href="#">P09619</a>
Synonyms:	CD140B; IBGC4; IMF1; JTK12; PDGFR; PDGFR-1; PDGFR1
Protein Families:	Druggable Genome, ES Cell Differentiation/IPS, Protein Kinase, Transmembrane
Protein Pathways:	Calcium signaling pathway, Colorectal cancer, Cytokine-cytokine receptor interaction, Focal adhesion, Gap junction, Glioma, MAPK signaling pathway, Melanoma, Pathways in cancer, Prostate cancer, Regulation of actin cytoskeleton



[View online »](#)

**Product images:**

Anti-PDGFRB antibody IHC of human kidney, renal tubular epithelium in cortex. Immunohistochemistry of formalin-fixed, paraffin-embedded tissue after heat-induced antigen retrieval.