

Product datasheet for **TA341143**

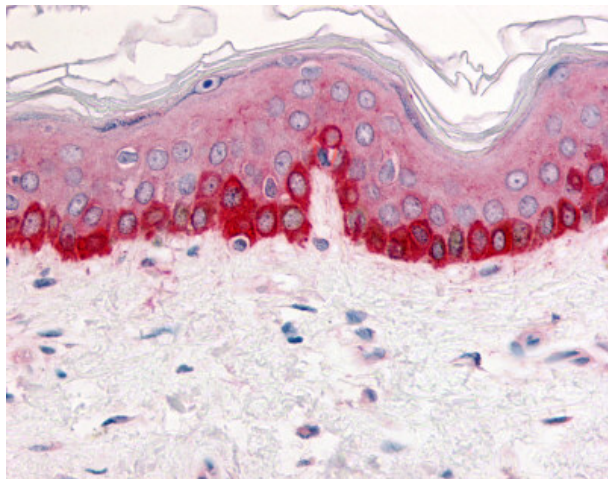
Integrin beta 1 (ITGB1) Rabbit Polyclonal Antibody

Product data:

Product Type:	Primary Antibodies
Applications:	IHC
Recommended Dilution:	IHC-P (10 µg/ml)
Reactivity:	Human (Predicted: Bat, Dog, Horse)
Host:	Rabbit
Clonality:	Polyclonal
Immunogen:	ITGB1 / Integrin Beta 1 / CD29 antibody was raised against synthetic 17 amino acid peptide from extracellular domain of human Integrin Beta 1. Percent identity with other species by BLAST analysis: Human, Gorilla, Orangutan, Gibbon, Monkey, Marmoset (100%); Dog, Bat, Panda, Horse (94%); Sheep, Bovine, Cat, Elephant, Pig (88%).
Formulation:	PBS, 0.1% sodium azide.
Concentration:	lot specific
Purification:	Immunoaffinity purified
Conjugation:	Unconjugated
Storage:	Store at -20°C as received.
Stability:	Stable for 12 months from date of receipt.
Gene Name:	integrin subunit beta 1
Database Link:	NP_002202 Entrez Gene 477956 Dog Entrez Gene 3688 Human P05556
Synonyms:	CD29; FNRB; GPIIA; MDF2; MSK12; VLA-BETA; VLAB
Protein Families:	Druggable Genome, ES Cell Differentiation/IPS, Transmembrane
Protein Pathways:	Arrhythmogenic right ventricular cardiomyopathy (ARVC), Axon guidance, Cell adhesion molecules (CAMs), Dilated cardiomyopathy, ECM-receptor interaction, Focal adhesion, Hypertrophic cardiomyopathy (HCM), Leukocyte transendothelial migration, Pathogenic Escherichia coli infection, Pathways in cancer, Regulation of actin cytoskeleton, Small cell lung cancer



[View online »](#)

Product images:

Anti-Integrin Beta 1 antibody IHC of human skin. Immunohistochemistry of formalin-fixed, paraffin-embedded tissue after heat-induced antigen retrieval.