

## Product datasheet for **TA341137**

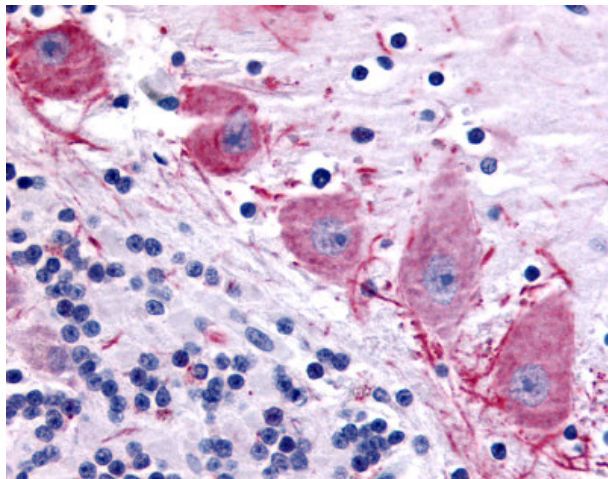
### DPP10 Rabbit Polyclonal Antibody

#### Product data:

Product Type:	Primary Antibodies
Applications:	IHC
Recommended Dilution:	IHC-P (10 µg/ml)
Reactivity:	Human (Predicted: Mouse, Rat, Hamster)
Host:	Rabbit
Clonality:	Polyclonal
Immunogen:	Dipeptidylpeptidase 10 / DPP10 antibody was raised against synthetic 14 amino acid peptide from extracellular domain of human DPP10. Percent identity with other species by BLAST analysis: Human, Gorilla, Gibbon, Monkey, Marmoset, Elephant, Panda, Bovine, Dog, Bat, Horse, Rabbit, Pig (100%); Mouse, Rat, Hamster (93%); Opossum, Chicken (86%).
Formulation:	PBS, 0.1% sodium azide.
Concentration:	lot specific
Purification:	Immunoaffinity purified
Conjugation:	Unconjugated
Storage:	Store at -20°C as received.
Stability:	Stable for 12 months from date of receipt.
Gene Name:	dipeptidyl peptidase like 10
Database Link:	<a href="#">NP_065919</a> <a href="#">Entrez Gene 269109 Mouse</a> <a href="#">Entrez Gene 363972 Rat</a> <a href="#">Entrez Gene 57628 Human</a> <a href="#">Q8N608</a>
Synonyms:	DPL2; DPPY; DPRP-3; DPRP3
Protein Families:	Druggable Genome, Protease, Transmembrane



[View online »](#)

**Product images:**

Anti-DPP10 antibody IHC of human brain, cerebellum Purkinje neurons.  
Immunohistochemistry of formalin-fixed, paraffin-embedded tissue after heat-induced antigen retrieval.