

Product datasheet for **TA341134**

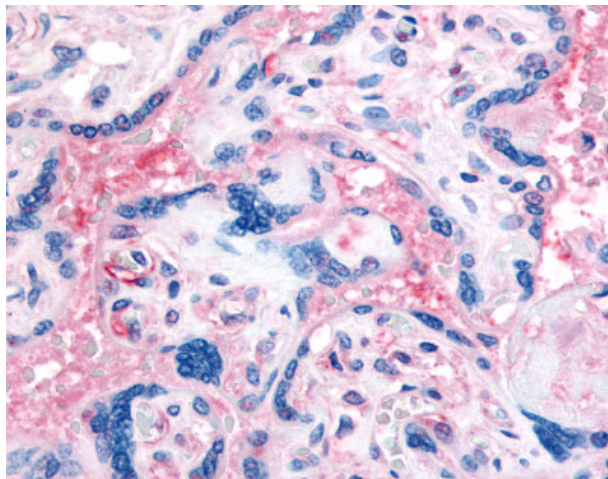
CD61 (ITGB3) Rabbit Polyclonal Antibody

Product data:

| | |
|-----------------------|--|
| Product Type: | Primary Antibodies |
| Applications: | IHC |
| Recommended Dilution: | IHC-P (10 µg/ml) |
| Reactivity: | Human (Predicted: Monkey) |
| Host: | Rabbit |
| Clonality: | Polyclonal |
| Immunogen: | ITGB3 / Integrin Beta 3 / CD61 antibody was raised against synthetic 14 amino acid peptide from internal region of human CD61. Percent identity with other species by BLAST analysis: Human, Gorilla, Gibbon, Monkey (100%); Marmoset (93%); Dog, Panda (86%). |
| Formulation: | PBS, 0.1% sodium azide. |
| Concentration: | lot specific |
| Purification: | Immunoaffinity purified |
| Conjugation: | Unconjugated |
| Storage: | Store at -20°C as received. |
| Stability: | Stable for 12 months from date of receipt. |
| Gene Name: | integrin subunit beta 3 |
| Database Link: | NP_000203 Entrez Gene 717379 Monkey Entrez Gene 3690 Human P05106 |
| Synonyms: | BDPLT2; BDPLT16; CD61; GP3A; GPIIIa; GT |
| Protein Families: | Druggable Genome, ES Cell Differentiation/IPS, Transmembrane |
| Protein Pathways: | Arrhythmogenic right ventricular cardiomyopathy (ARVC), Dilated cardiomyopathy, ECM-receptor interaction, Focal adhesion, Hematopoietic cell lineage, Hypertrophic cardiomyopathy (HCM), Regulation of actin cytoskeleton |



[View online »](#)

Product images:

Anti-CD61 antibody IHC of human placenta, terminal villi, red blood cells.
Immunohistochemistry of formalin-fixed, paraffin-embedded tissue after heat-induced antigen retrieval.