

Product datasheet for **TA341132**

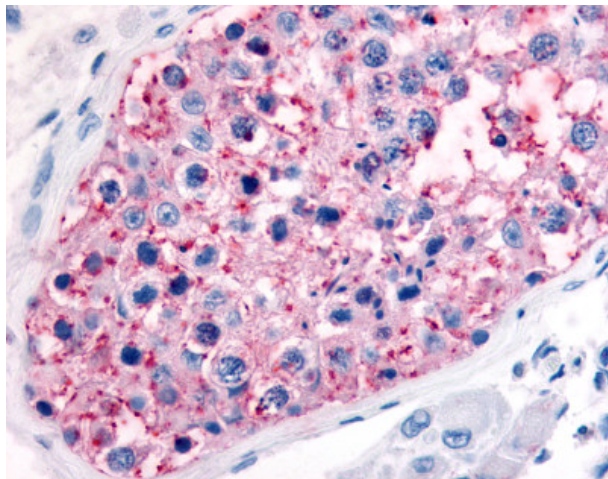
GJA1 Rabbit Polyclonal Antibody

Product data:

| | |
|-----------------------|--|
| Product Type: | Primary Antibodies |
| Applications: | IHC |
| Recommended Dilution: | IHC-P (2.5 - 5 µg/ml) |
| Reactivity: | Human (Predicted: Monkey, Mouse, Rat, Bat, Bovine, Dog, Hamster, Horse, Pig, Rabbit, Xenopus) |
| Host: | Rabbit |
| Clonality: | Polyclonal |
| Immunogen: | GJA1 / CX43 / Connexin 43 antibody was raised against synthetic 15 amino acid peptide from internal region of human GJA1 / Connexin 43. Percent identity with other species by BLAST analysis: Human, Chimpanzee, Gorilla, Turkey, Zebra finch, Chicken, Platypus (100%); Orangutan, Gibbon, Monkey, Marmoset, Mouse, Rat, Hamster, Elephant, Panda, Bovine, Dog, Bat, Horse, Rabbit, Pig, Opossum, Lizard, Xenopus (93%); Galago, Guinea pig (87%). |
| Formulation: | PBS, 0.1% sodium azide. |
| Concentration: | lot specific |
| Purification: | Immunoaffinity purified |
| Conjugation: | Unconjugated |
| Storage: | Store at -20°C as received. |
| Stability: | Stable for 12 months from date of receipt. |
| Gene Name: | gap junction protein alpha 1 |
| Database Link: | NP_000156 Entrez Gene 14609 Mouse Entrez Gene 24392 Rat Entrez Gene 403418 Dog Entrez Gene 714344 Monkey Entrez Gene 2697 Human P17302 |
| Synonyms: | AVSD3; CMDR; CX43; EKVP; GJAL; HLHS1; HSS; ODDD; PPKCA |
| Protein Families: | Druggable Genome, Ion Channels: Other, Transmembrane |
| Protein Pathways: | Arrhythmogenic right ventricular cardiomyopathy (ARVC), Gap junction |



[View online »](#)

Product images:

Anti-GJA1 / Connexin 43 antibody IHC of human seminiferous tubule and Leydig cells. Immunohistochemistry of formalin-fixed, paraffin-embedded tissue after heat-induced antigen retrieval.