

Product datasheet for **TA341131**

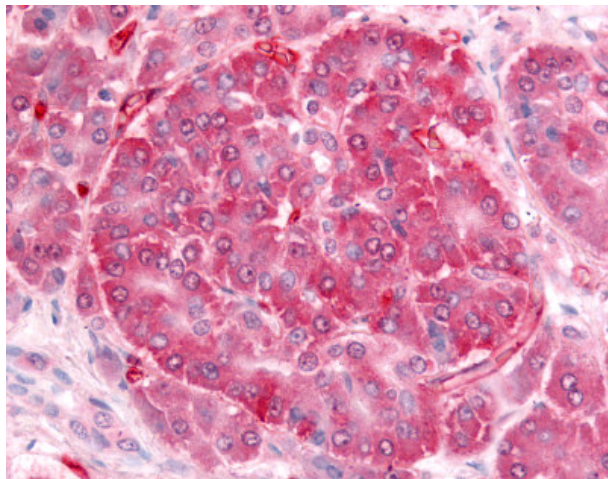
Insulin Receptor (INSR) Rabbit Polyclonal Antibody

Product data:

Product Type:	Primary Antibodies
Applications:	IHC
Recommended Dilution:	IHC-P (10 µg/ml)
Reactivity:	Human (Predicted: Mouse, Rat, Bovine, Dog)
Host:	Rabbit
Clonality:	Polyclonal
Immunogen:	INSR / Insulin Receptor antibody was raised against synthetic 16 amino acid peptide from internal region of human Insulin Receptor. Percent identity with other species by BLAST analysis: Human, Gorilla, Gibbon, Monkey (100%); Mouse, Rat, Bovine, Dog, Elephant, Panda (94%); Bat, Horse, Pig (88%); Marmoset (81%).
Formulation:	PBS, 0.1% sodium azide.
Concentration:	lot specific
Purification:	Immunoaffinity purified
Conjugation:	Unconjugated
Storage:	Store at -20°C as received.
Stability:	Stable for 12 months from date of receipt.
Gene Name:	insulin receptor
Database Link:	NP_000199 Entrez Gene 16337 Mouse Entrez Gene 24954 Rat Entrez Gene 484990 Dog Entrez Gene 3643 Human P06213
Synonyms:	CD220; HHF5
Protein Families:	Druggable Genome, Protein Kinase, Transmembrane
Protein Pathways:	Adherens junction, Insulin signaling pathway, Type II diabetes mellitus



[View online »](#)

Product images:

Anti-Insulin Receptor antibody IHC of human pancreas, islet of Langerhans. Immunohistochemistry of formalin-fixed, paraffin-embedded tissue after heat-induced antigen retrieval.