

Product datasheet for **TA341128**

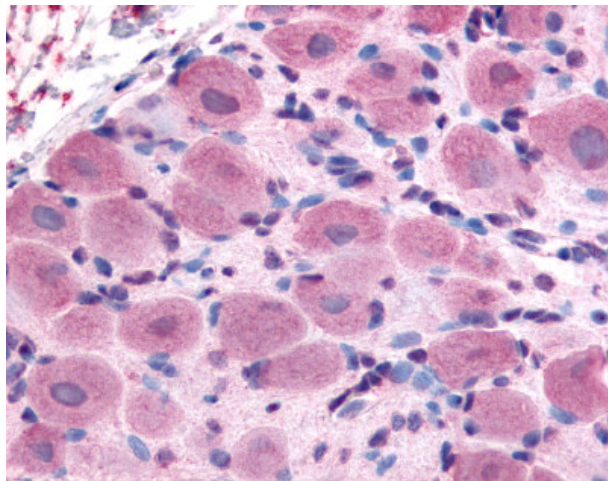
TRPA1 Rabbit Polyclonal Antibody

Product data:

Product Type:	Primary Antibodies
Applications:	IHC
Recommended Dilution:	IHC-P (10 - 20 µg/ml)
Reactivity:	Human (Predicted: Monkey)
Host:	Rabbit
Clonality:	Polyclonal
Immunogen:	TRPA1 antibody was raised against synthetic 18 amino acid peptide from internal region of human TRPA1. Percent identity with other species by BLAST analysis: Human, Gibbon, Monkey (100%); Marmoset (94%); Dog, Bovine, Elephant (89%); Rat, Bat, Panda, Horse, Rabbit (83%).
Formulation:	PBS, 0.1% sodium azide.
Concentration:	lot specific
Purification:	Immunoaffinity purified
Conjugation:	Unconjugated
Storage:	Store at -20°C as received.
Stability:	Stable for 12 months from date of receipt.
Gene Name:	transient receptor potential cation channel subfamily A member 1
Database Link:	NP_015628 Entrez Gene 694623 Monkey Entrez Gene 8989 Human O75762
Synonyms:	ANKTM1; FEPS
Protein Families:	Druggable Genome, Ion Channels: Transient receptor potential, Transmembrane



[View online »](#)

Product images:

Anti-TRPA1 antibody IHC of human spinal cord, dorsal root ganglion. Immunohistochemistry of formalin-fixed, paraffin-embedded tissue after heat-induced antigen retrieval.