

## Product datasheet for **TA341127**

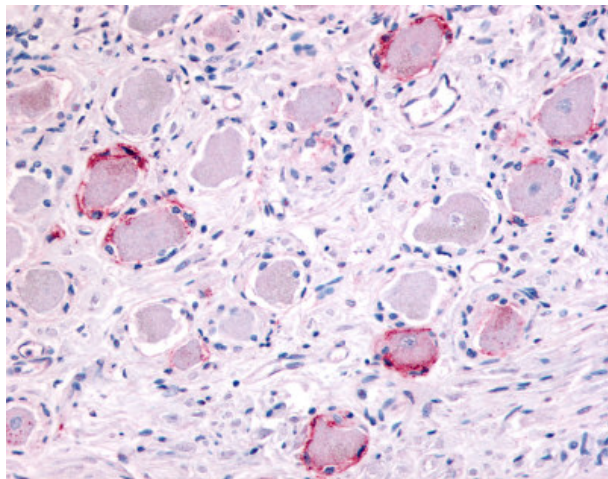
### TRPA1 Rabbit Polyclonal Antibody

#### Product data:

|                       |  |
|-----------------------|--|
| Product Type:         | Primary Antibodies   |
| Applications:         | IHC  |
| Recommended Dilution: | IHC-P (7.5 µg/ml)  |
| Reactivity:           | Human  |
| Host:                 | Rabbit   |
| Clonality:            | Polyclonal   |
| Immunogen:            | TRPA1 antibody was raised against synthetic 19 amino acid peptide from internal region of human TRPA1. Percent identity with other species by BLAST analysis: Human, Gorilla, Gibbon (100%); Marmoset, Bovine (89%); Monkey, Elephant, Dog, Rabbit, Pig (84%). |
| Formulation:          | PBS, 0.1% sodium azide.  |
| Concentration:        | lot specific   |
| Purification:         | Immunoaffinity purified  |
| Conjugation:          | Unconjugated   |
| Storage:              | Store at -20°C as received.  |
| Stability:            | Stable for 12 months from date of receipt.   |
| Gene Name:            | transient receptor potential cation channel subfamily A member 1   |
| Database Link:        | <a href="#">NP_015628</a><br><a href="#">Entrez Gene 8989 Human</a><br><a href="#">O75762</a>  |
| Synonyms:             | ANKTM1; FEPS   |
| Protein Families:     | Druggable Genome, Ion Channels: Transient receptor potential, Transmembrane  |



[View online »](#)

**Product images:**

Anti-TRPA1 antibody IHC of human ganglion cells. Immunohistochemistry of formalin-fixed, paraffin-embedded tissue after heat-induced antigen retrieval.