

## Product datasheet for **TA341126**

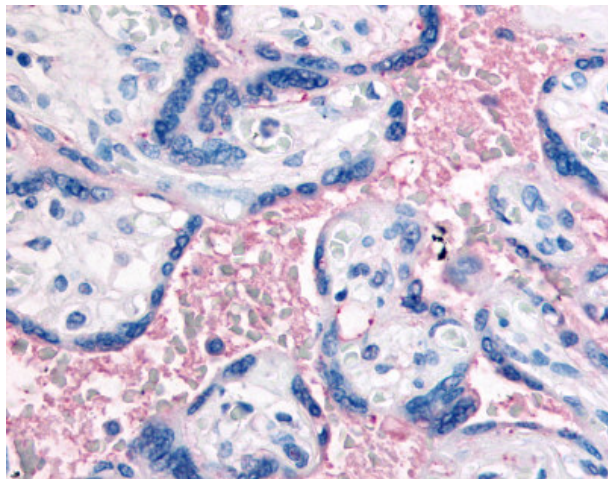
### CD61 (ITGB3) Rabbit Polyclonal Antibody

#### Product data:

Product Type:	Primary Antibodies
Applications:	IHC
Recommended Dilution:	IHC-P (10 - 20 µg/ml)
Reactivity:	Human (Predicted: Monkey)
Host:	Rabbit
Clonality:	Polyclonal
Immunogen:	ITGB3 / Integrin Beta 3 / CD61 antibody was raised against synthetic 19 amino acid peptide from N-terminus of human CD61. Percent identity with other species by BLAST analysis: Human, Gorilla, Gibbon, Monkey (100%); Marmoset (95%); Hamster, Panda (89%); Mouse, Rabbit (84%).
Formulation:	PBS, 0.1% sodium azide.
Concentration:	lot specific
Purification:	Immunoaffinity purified
Conjugation:	Unconjugated
Storage:	Store at -20°C as received.
Stability:	Stable for 12 months from date of receipt.
Gene Name:	integrin subunit beta 3
Database Link:	<a href="#">NP_000203</a> <a href="#">Entrez Gene 717379 Monkey</a> <a href="#">Entrez Gene 3690 Human</a> <a href="#">P05106</a>
Synonyms:	BDPLT2; BDPLT16; CD61; GP3A; GPIIIa; GT
Protein Families:	Druggable Genome, ES Cell Differentiation/IPS, Transmembrane
Protein Pathways:	Arrhythmogenic right ventricular cardiomyopathy (ARVC), Dilated cardiomyopathy, ECM-receptor interaction, Focal adhesion, Hematopoietic cell lineage, Hypertrophic cardiomyopathy (HCM), Regulation of actin cytoskeleton



[View online »](#)

**Product images:**

Anti-CD61 antibody IHC of human placenta, terminal villi, red blood cells. Immunohistochemistry of formalin-fixed, paraffin-embedded tissue after heat-induced antigen retrieval.