

## Product datasheet for **TA341124**

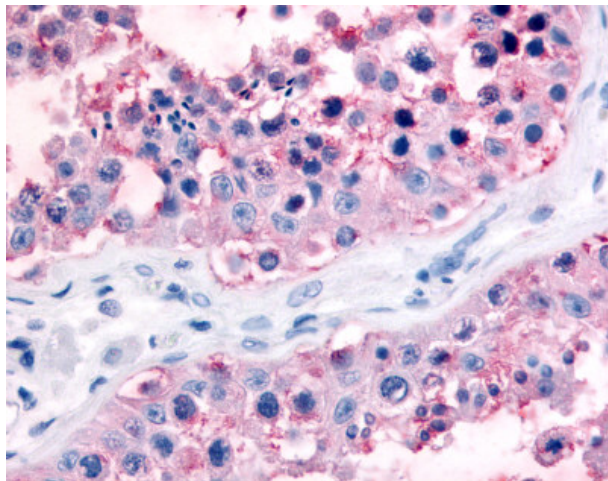
### GJA1 Rabbit Polyclonal Antibody

#### Product data:

Product Type:	Primary Antibodies
Applications:	IHC
Recommended Dilution:	IHC-P (10 - 20 µg/ml)
Reactivity:	Human (Predicted: Bat, Horse, Chicken, Xenopus)
Host:	Rabbit
Clonality:	Polyclonal
Immunogen:	GJA1 / CX43 / Connexin 43 antibody was raised against synthetic 16 amino acid peptide from C-terminus of human GJA1 / Connexin 43. Percent identity with other species by BLAST analysis: Human, Gorilla, Gibbon, Monkey, Marmoset, Mouse, Rat, Bovine, Dog, Hamster, Elephant, Panda, Rabbit, Pig, Opossum, Guinea pig (100%); Bat, Horse, Chicken, Lizard, Xenopus (94%); Trout, Salmon (88%); Zebrafish, Sea anemone, Nematode (81%).
Formulation:	PBS, 0.1% sodium azide.
Concentration:	lot specific
Purification:	Immunoaffinity purified
Conjugation:	Unconjugated
Storage:	Store at -20°C as received.
Stability:	Stable for 12 months from date of receipt.
Gene Name:	gap junction protein alpha 1
Database Link:	<a href="#">NP_000156</a> <a href="#">Entrez Gene 2697 Human P17302</a>
Synonyms:	AVSD3; CMDR; CX43; EKVP; GJAL; HLHS1; HSS; ODDD; PPKCA
Protein Families:	Druggable Genome, Ion Channels: Other, Transmembrane
Protein Pathways:	Arrhythmogenic right ventricular cardiomyopathy (ARVC), Gap junction



[View online »](#)

**Product images:**

Anti-GJA1 / Connexin 43 antibody IHC of human testis, seminiferous tubules and Leydig cells. Immunohistochemistry of formalin-fixed, paraffin-embedded tissue after heat-induced antigen retrieval.