

Product datasheet for **TA341123**

EGFR Rabbit Polyclonal Antibody

Product data:

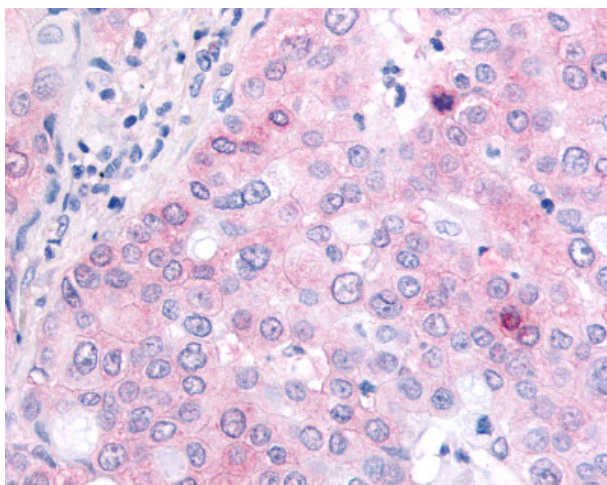
| | |
|-----------------------|--|
| Product Type: | Primary Antibodies |
| Applications: | IHC |
| Recommended Dilution: | IHC-P (2.5 µg/ml) |
| Reactivity: | Human (Predicted: Monkey, Rat) |
| Host: | Rabbit |
| Clonality: | Polyclonal |
| Immunogen: | EGFR antibody was raised against synthetic 16 amino acid peptide from C-terminus of human EGFR. Percent identity with other species by BLAST analysis: Human, Gorilla, Gibbon (100%); Marmoset, Rat (94%); Mouse (88%); Bovine, Dog, Hamster, Elephant, Horse (81%). |
| Formulation: | PBS, 0.1% sodium azide. |
| Concentration: | lot specific |
| Purification: | Immunoaffinity purified |
| Conjugation: | Unconjugated |
| Storage: | Store at -20°C as received. |
| Stability: | Stable for 12 months from date of receipt. |
| Gene Name: | epidermal growth factor receptor |
| Database Link: | NP_958439 Entrez Gene 24329 Rat Entrez Gene 613027 Monkey Entrez Gene 1956 Human P00533 |
| Synonyms: | ERBB; ERBB1; HER1; mENA; NISBD2; PIG61 |
| Protein Families: | Adult stem cells, Cancer stem cells, Druggable Genome, ES Cell Differentiation/IPS, Protein Kinase, Secreted Protein, Stem cell relevant signaling - JAK/STAT signaling pathway, Transmembrane |



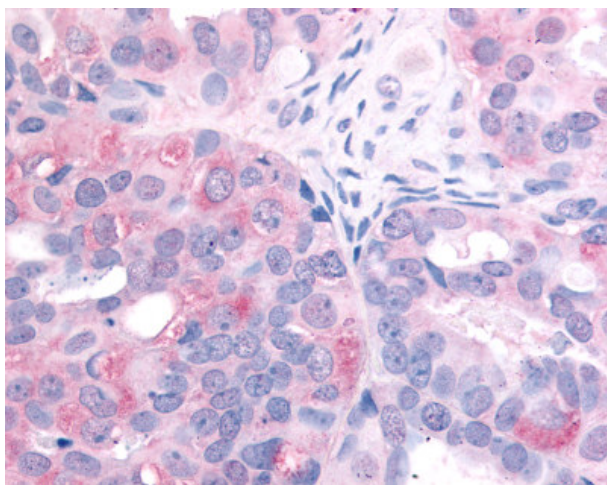
[View online »](#)

Protein Pathways:

Adherens junction, Bladder cancer, Calcium signaling pathway, Colorectal cancer, Cytokine-cytokine receptor interaction, Dorso-ventral axis formation, Endocytosis, Endometrial cancer, Epithelial cell signaling in Helicobacter pylori infection, ErbB signaling pathway, Focal adhesion, Gap junction, Glioma, GnRH signaling pathway, MAPK signaling pathway, Melanoma, Non-small cell lung cancer, Pancreatic cancer, Pathways in cancer, Prostate cancer, Regulation of actin cytoskeleton

Product images:

Anti-EGFR antibody IHC of human Lung, Non-Small Cell Carcinoma. Immunohistochemistry of formalin-fixed, paraffin-embedded tissue after heat-induced antigen retrieval.



Anti-EGFR antibody IHC of human Ovary, Carcinoma. Immunohistochemistry of formalin-fixed, paraffin-embedded tissue after heat-induced antigen retrieval.