

Product datasheet for **TA341121**

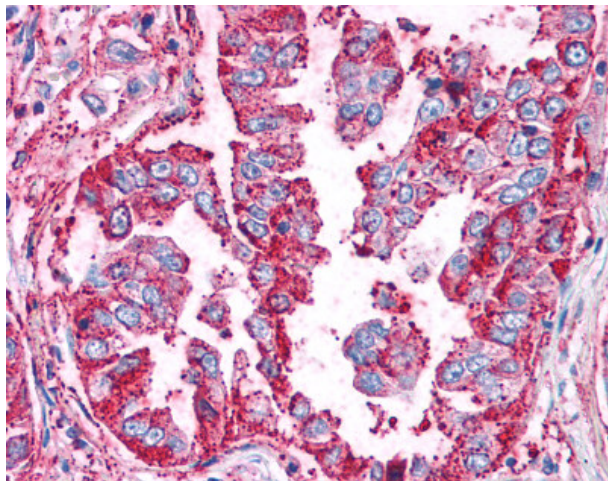
WNT5B Rabbit Polyclonal Antibody

Product data:

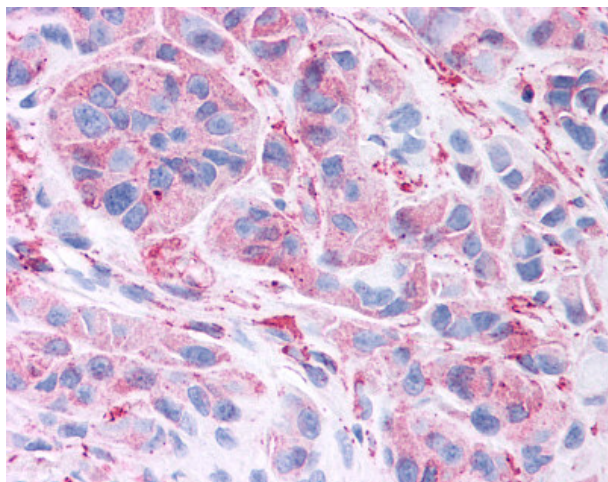
Product Type:	Primary Antibodies
Applications:	IHC
Recommended Dilution:	IHC-P (2.5 µg/ml)
Reactivity:	Human (Predicted: Dog, Horse, Pig, Rabbit)
Host:	Rabbit
Clonality:	Polyclonal
Immunogen:	WNT5B antibody was raised against synthetic 14 amino acid peptide from internal region of human WNT5B. Percent identity with other species by BLAST analysis: Human, Orangutan, Gibbon, Monkey, Marmoset (100%); Gorilla, Elephant, Panda, Dog, Horse, Rabbit, Pig, Opossum (93%); Mouse, Hamster, Bovine (86%).
Formulation:	PBS, 0.1% sodium azide.
Concentration:	lot specific
Purification:	Immunoaffinity purified
Conjugation:	Unconjugated
Storage:	Store at -20°C as received.
Stability:	Stable for 12 months from date of receipt.
Gene Name:	Wnt family member 5B
Database Link:	NP_110402 Entrez Gene 486756 Dog Entrez Gene 81029 Human Q9H1J7
Synonyms:	MGC2648
Protein Families:	Secreted Protein
Protein Pathways:	Basal cell carcinoma, Hedgehog signaling pathway, Melanogenesis, Pathways in cancer, Wnt signaling pathway



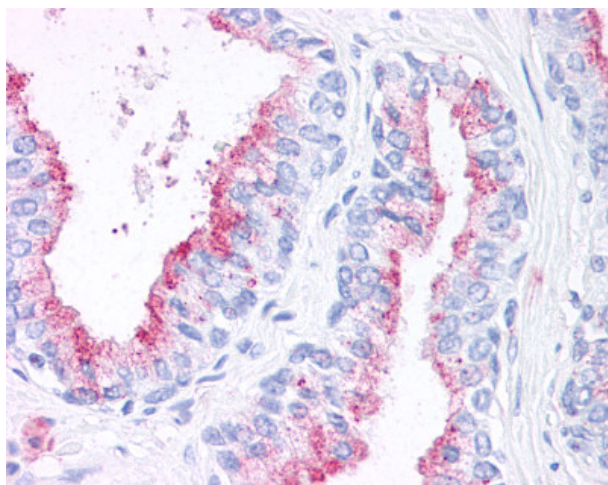
[View online »](#)

Product images:

Anti-WNT5B antibody IHC of human Lung, Non-Small Cell Carcinoma. Immunohistochemistry of formalin-fixed, paraffin-embedded tissue after heat-induced antigen retrieval.



Anti-WNT5B antibody IHC of human Skin, Melanoma. Immunohistochemistry of formalin-fixed, paraffin-embedded tissue after heat-induced antigen retrieval.



Anti-WNT5B antibody IHC of human prostate. Immunohistochemistry of formalin-fixed, paraffin-embedded tissue after heat-induced antigen retrieval.