

## Product datasheet for **TA341120**

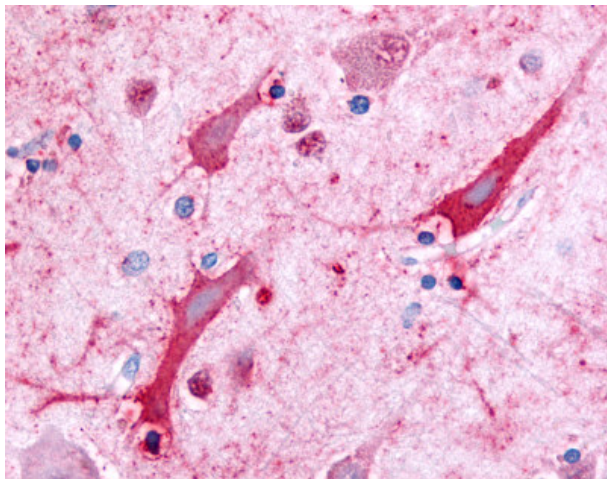
### CERK Rabbit Polyclonal Antibody

#### Product data:

Product Type:	Primary Antibodies
Applications:	IHC
Recommended Dilution:	IHC-P (20 µg/ml)
Reactivity:	Human (Predicted: Monkey)
Host:	Rabbit
Clonality:	Polyclonal
Immunogen:	Ceramide Kinase / CERK antibody was raised against synthetic 20 amino acid peptide from N-terminal extracellular domain of human CERK. Percent identity with other species by BLAST analysis: Human (100%); Gorilla, Gibbon, Monkey, Marmoset (90%); Dog, Panda (85%); Bovine, Elephant, Rabbit (80%).
Formulation:	PBS, 0.1% sodium azide.
Concentration:	lot specific
Purification:	Immunoaffinity purified
Conjugation:	Unconjugated
Storage:	Store at -20°C as received.
Stability:	Stable for 12 months from date of receipt.
Gene Name:	ceramide kinase
Database Link:	<a href="#">NP_073603</a> <a href="#">Entrez Gene 714480 Monkey</a> <a href="#">Entrez Gene 64781 Human</a> <a href="#">Q8TCT0</a>
Synonyms:	dA59H18.2; dA59H18.3; hCERK; LK4
Protein Families:	Druggable Genome
Protein Pathways:	Metabolic pathways, Sphingolipid metabolism



[View online »](#)

**Product images:**

Anti-CERK antibody IHC of human brain, cortex. Immunohistochemistry of formalin-fixed, paraffin-embedded tissue after heat-induced antigen retrieval.