

## Product datasheet for **TA341116**

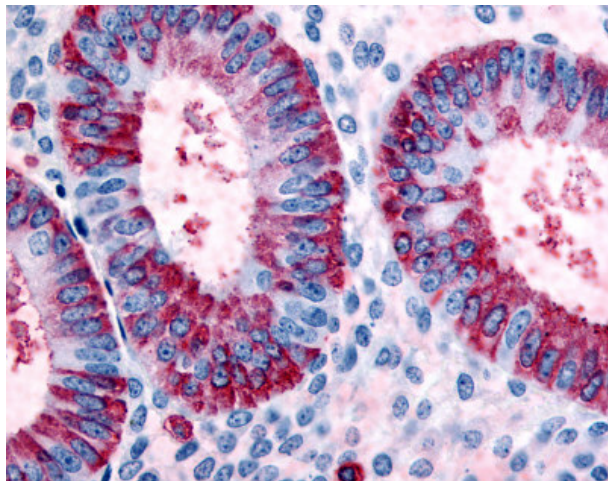
### DKK1 Rabbit Polyclonal Antibody

#### Product data:

Product Type:	Primary Antibodies
Applications:	IHC
Recommended Dilution:	IHC-P (10 µg/ml)
Reactivity:	Human (Predicted: Monkey, Bovine, Horse, Pig, Rabbit)
Host:	Rabbit
Clonality:	Polyclonal
Immunogen:	DKK1 antibody was raised against synthetic 14 amino acid peptide from N-Terminus of human DKK1. Percent identity with other species by BLAST analysis: Human, Chimpanzee, Gorilla, Baboon, Monkey, Galago (100%); Orangutan, Gibbon, Marmoset, Elephant, Bovine, Horse, Rabbit, Pig (93%); Rat, Bat (86%).
Formulation:	PBS, 0.1% sodium azide.
Concentration:	lot specific
Purification:	Immunoaffinity purified
Conjugation:	Unconjugated
Storage:	Store at -20°C as received.
Stability:	Stable for 12 months from date of receipt.
Gene Name:	dickkopf WNT signaling pathway inhibitor 1
Database Link:	<a href="#">NP_036374</a> <a href="#">Entrez Gene 702997 Monkey</a> <a href="#">Entrez Gene 22943 Human</a> <a href="#">O94907</a>
Synonyms:	DKK-1; SK
Protein Families:	Adult stem cells, Cancer stem cells, Druggable Genome, ES Cell Differentiation/IPS, Secreted Protein, Stem cell relevant signaling - Wnt Signaling pathway
Protein Pathways:	Wnt signaling pathway



[View online »](#)

**Product images:**

Anti-DKK1 antibody IHC of human uterus, endometrium. Immunohistochemistry of formalin-fixed, paraffin-embedded tissue after heat-induced antigen retrieval.