

Product datasheet for **TA341115**

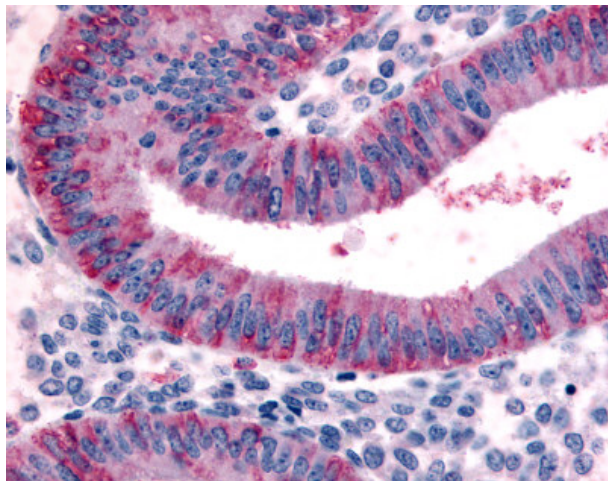
DKK1 Rabbit Polyclonal Antibody

Product data:

Product Type:	Primary Antibodies
Applications:	IHC
Recommended Dilution:	IHC-P (20 µg/ml)
Reactivity:	Human (Predicted: Mouse, Rat, Bat)
Host:	Rabbit
Clonality:	Polyclonal
Immunogen:	DKK1 antibody was raised against synthetic 16 amino acid peptide from N-terminus of human DKK1. Percent identity with other species by BLAST analysis: Human, Gorilla, Monkey, Marmoset, Horse, Pig (100%); Gibbon, Mouse, Rat, Bat, Elephant (94%); Bovine, Hamster (88%); Panda, Rabbit (81%).
Formulation:	PBS, 0.1% sodium azide.
Concentration:	lot specific
Purification:	Immunoaffinity purified
Conjugation:	Unconjugated
Storage:	Store at -20°C as received.
Stability:	Stable for 12 months from date of receipt.
Gene Name:	dickkopf WNT signaling pathway inhibitor 1
Database Link:	NP_036374 Entrez Gene 13380 Mouse Entrez Gene 293897 Rat Entrez Gene 22943 Human O94907
Synonyms:	DKK-1; SK
Protein Families:	Adult stem cells, Cancer stem cells, Druggable Genome, ES Cell Differentiation/IPS, Secreted Protein, Stem cell relevant signaling - Wnt Signaling pathway
Protein Pathways:	Wnt signaling pathway



[View online »](#)

Product images:

Anti-DKK1 antibody IHC of human uterus, endometrium. Immunohistochemistry of formalin-fixed, paraffin-embedded tissue after heat-induced antigen retrieval.