

## Product datasheet for **TA341114**

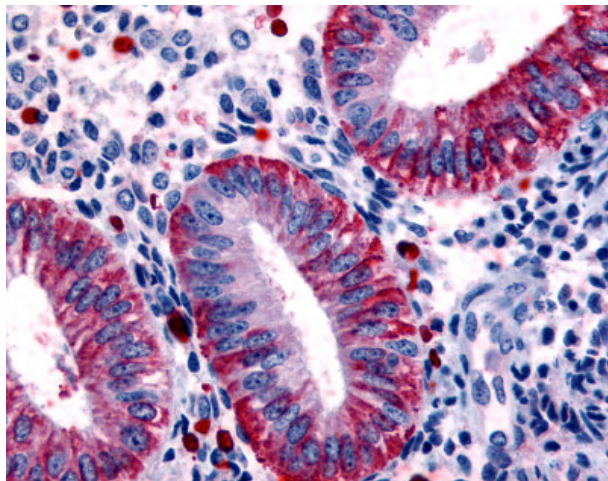
### DKK1 Rabbit Polyclonal Antibody

#### Product data:

Product Type:	Primary Antibodies
Applications:	IHC
Recommended Dilution:	IHC-P (10 µg/ml)
Reactivity:	Human (Predicted: Bovine, Goat, Rabbit, Sheep, Guinea Pig)
Host:	Rabbit
Clonality:	Polyclonal
Immunogen:	DKK1 antibody was raised against synthetic 16 amino acid peptide from internal region of human DKK1. Percent identity with other species by BLAST analysis: Human, Chimpanzee, Gorilla, Orangutan, Gibbon, Baboon, Monkey, Marmoset, Bat, Horse, Pig (100%); Galago, Sheep, Goat, Elephant, Bovine, Rabbit, Guinea pig (94%); Hamster, Panda, Dog (88%).
Formulation:	PBS, 0.1% sodium azide.
Concentration:	lot specific
Purification:	Immunoaffinity purified
Conjugation:	Unconjugated
Storage:	Store at -20°C as received.
Stability:	Stable for 12 months from date of receipt.
Gene Name:	dickkopf WNT signaling pathway inhibitor 1
Database Link:	<a href="#">NP_036374</a> <a href="#">Entrez Gene 22943 Human</a> <a href="#">O94907</a>
Synonyms:	DKK-1; SK
Protein Families:	Adult stem cells, Cancer stem cells, Druggable Genome, ES Cell Differentiation/IPS, Secreted Protein, Stem cell relevant signaling - Wnt Signaling pathway
Protein Pathways:	Wnt signaling pathway



[View online »](#)

**Product images:**

Anti-DKK1 antibody IHC of human uterus, endometrium. Immunohistochemistry of formalin-fixed, paraffin-embedded tissue after heat-induced antigen retrieval.