

## Product datasheet for **TA341112**

### SLC5A3 Rabbit Polyclonal Antibody

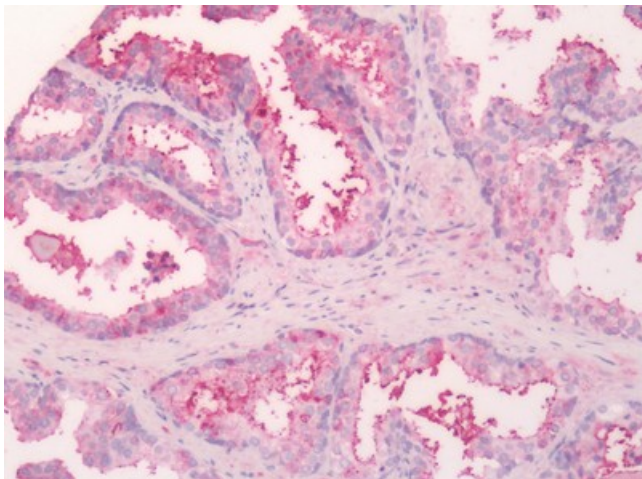
#### Product data:

Product Type:	Primary Antibodies
Applications:	IHC
Recommended Dilution:	IHC-P (10 - 20 µg/ml)
Reactivity:	Human (Predicted: Monkey)
Host:	Rabbit
Clonality:	Polyclonal
Immunogen:	SLC5A3 / SMIT2 antibody was raised against synthetic 18 amino acid peptide from internal region of human SLC5A3. Percent identity with other species by BLAST analysis: Human, Gorilla (100%); Baboon, Monkey, Galago (94%); Marmoset, Bovine, Dog, Bat, Elephant, Panda, Rabbit, Pig (89%); Shrew, Horse (83%).
Formulation:	PBS, 0.1% sodium azide.
Concentration:	lot specific
Purification:	Immunoaffinity purified
Conjugation:	Unconjugated
Storage:	Store at -20°C as received.
Stability:	Stable for 12 months from date of receipt.
Gene Name:	solute carrier family 5 member 3
Database Link:	<a href="#">NP_008864</a> <a href="#">Entrez Gene 698346 Monkey</a> <a href="#">Entrez Gene 6526 Human</a>
Synonyms:	BCW2; SMIT; SMIT1; SMIT2
Protein Families:	Transmembrane



[View online »](#)

**Product images:**



Human Prostate: Formalin-Fixed, Paraffin-Embedded (FFPE)