

Product datasheet for **TA341111**

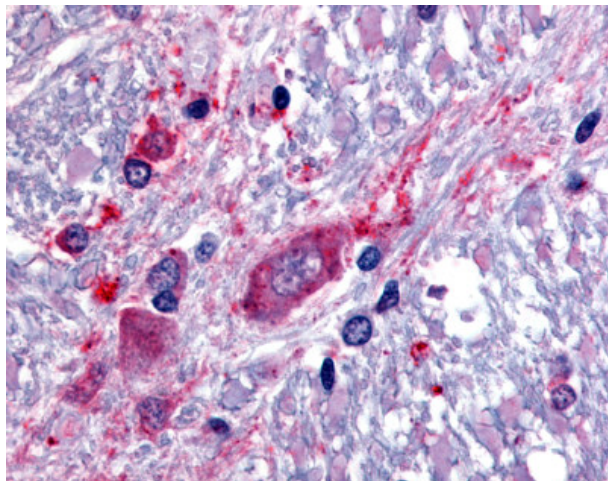
SLC5A3 Rabbit Polyclonal Antibody

Product data:

Product Type:	Primary Antibodies
Applications:	IHC
Recommended Dilution:	IHC-P (20 µg/ml)
Reactivity:	Human (Predicted: Monkey, Mouse, Hamster)
Host:	Rabbit
Clonality:	Polyclonal
Immunogen:	SLC5A3 / SMIT2 antibody was raised against synthetic 18 amino acid peptide from C-terminus of human SLC5A3. Percent identity with other species by BLAST analysis: Human, Baboon, Monkey, Galago, Bat, Bovine, Dog, Elephant, Panda, Rabbit, Pig (100%); Marmoset, Mouse, Hamster, Armadillo (94%); Shrew (89%); Rat (83%).
Formulation:	PBS, 0.1% sodium azide.
Concentration:	lot specific
Purification:	Immunoaffinity purified
Conjugation:	Unconjugated
Storage:	Store at -20°C as received.
Stability:	Stable for 12 months from date of receipt.
Gene Name:	solute carrier family 5 member 3
Database Link:	NP_008864 Entrez Gene 53881 Mouse Entrez Gene 698346 Monkey Entrez Gene 6526 Human
Synonyms:	BCW2; SMIT; SMIT1; SMIT2
Protein Families:	Transmembrane



[View online »](#)

Product images:

Anti-SLC5A3 antibody IHC of human spinal cord. Immunohistochemistry of formalin-fixed, paraffin-embedded tissue after heat-induced antigen retrieval.