

## Product datasheet for **TA341110**

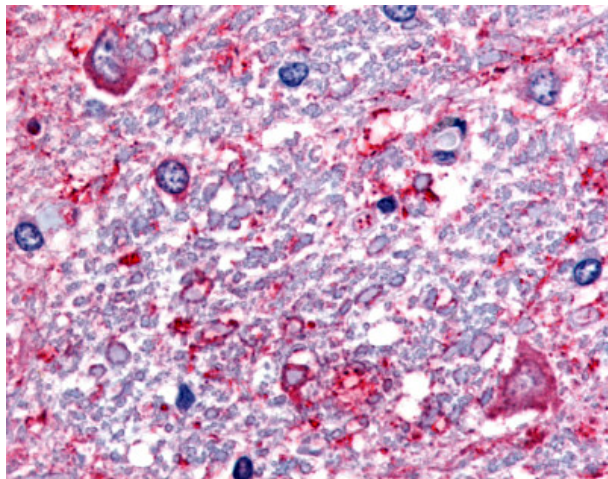
### SLC5A3 Rabbit Polyclonal Antibody

#### Product data:

Product Type:	Primary Antibodies
Applications:	IHC
Recommended Dilution:	IHC-P (20 µg/ml)
Reactivity:	Human (Predicted: Bat, Bovine, Dog, Pig, Rabbit)
Host:	Rabbit
Clonality:	Polyclonal
Immunogen:	SLC5A3 / SMIT2 antibody was raised against synthetic 17 amino acid peptide from internal region of human SLC5A3. Percent identity with other species by BLAST analysis: Baboon, Monkey, Marmoset (100%); Human, Galago, Elephant, Panda, Bat, Bovine, Dog, Rabbit, Pig (94%); Rat (88%); Mouse, Hamster, Guinea pig, Armadillo (81%).
Formulation:	PBS, 0.1% sodium azide.
Concentration:	lot specific
Purification:	Immunoaffinity purified
Conjugation:	Unconjugated
Storage:	Store at -20°C as received.
Stability:	Stable for 12 months from date of receipt.
Gene Name:	solute carrier family 5 member 3
Database Link:	<a href="#">NP_008864</a> <a href="#">Entrez Gene 106558089 Dog</a> <a href="#">Entrez Gene 445542 Dog</a> <a href="#">Entrez Gene 6526 Human</a>
Synonyms:	BCW2; SMIT; SMIT1; SMIT2
Protein Families:	Transmembrane



[View online »](#)

**Product images:**

Anti-SLC5A3 antibody IHC of human spinal cord. Immunohistochemistry of formalin-fixed, paraffin-embedded tissue after heat-induced antigen retrieval.