

Product datasheet for **TA341109**

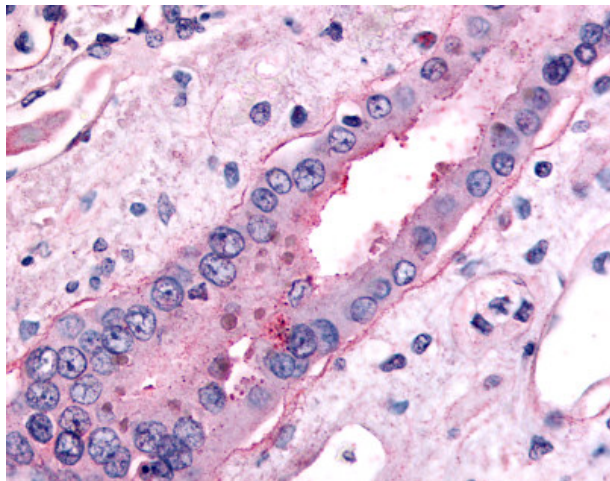
SGLT2 (SLC5A2) Rabbit Polyclonal Antibody

Product data:

Product Type:	Primary Antibodies
Applications:	IHC
Recommended Dilution:	IHC-P (20 µg/ml)
Reactivity:	Human (Predicted: Monkey, Mouse, Bat, Bovine, Hamster)
Host:	Rabbit
Clonality:	Polyclonal
Immunogen:	SLC5A2 / SGLT2 antibody was raised against synthetic 17 amino acid peptide from C-terminus of human SLC5A2. Percent identity with other species by BLAST analysis: Human, Gorilla, Gibbon, Monkey, Rat, Elephant, Horse (100%); Marmoset, Mouse, Hamster, Bat, Bovine (94%); Dog (88%); Panda, Rabbit (82%).
Formulation:	PBS, 0.1% sodium azide.
Concentration:	lot specific
Purification:	Immunoaffinity purified
Conjugation:	Unconjugated
Storage:	Store at -20°C as received.
Stability:	Stable for 12 months from date of receipt.
Gene Name:	solute carrier family 5 member 2
Database Link:	NP_003032 Entrez Gene 246787 Mouse Entrez Gene 714228 Monkey Entrez Gene 6524 Human P31639
Synonyms:	SGLT2
Protein Families:	Transmembrane



[View online »](#)

Product images:

Anti-SLC5A2 antibody IHC of human kidney, collecting duct. Immunohistochemistry of formalin-fixed, paraffin-embedded tissue after heat-induced antigen retrieval.