

## Product datasheet for **TA341107**

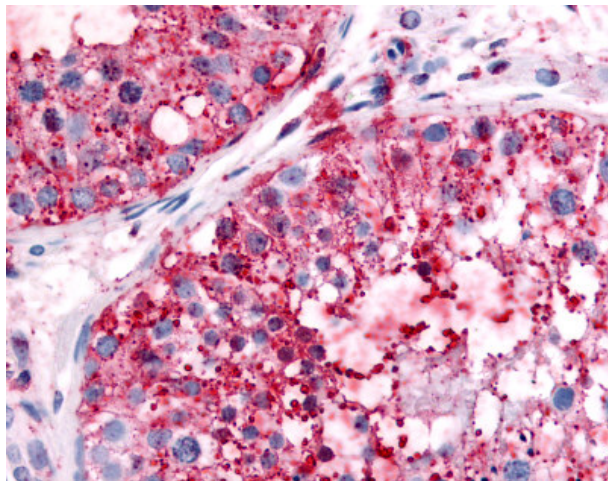
### UCHL3 Rabbit Polyclonal Antibody

#### Product data:

Product Type:	Primary Antibodies
Applications:	IHC
Recommended Dilution:	IHC-P (10 µg/ml)
Reactivity:	Human (Predicted: Mouse, Rat, Pig, Rabbit)
Host:	Rabbit
Clonality:	Polyclonal
Immunogen:	UCHL3 antibody was raised against synthetic 18 amino acid peptide from internal region of human UCHL3. Percent identity with other species by BLAST analysis: Human, Gorilla, Orangutan, Gibbon, Monkey, Marmoset, Dog, Bovine, Elephant, Panda, Horse (100%); Mouse, Rat, Rabbit, Pig (94%); Opossum (83%).
Formulation:	PBS, 0.1% sodium azide.
Concentration:	lot specific
Purification:	Immunoaffinity purified
Conjugation:	Unconjugated
Storage:	Store at -20°C as received.
Stability:	Stable for 12 months from date of receipt.
Gene Name:	ubiquitin C-terminal hydrolase L3
Database Link:	<a href="#">NP_005993</a> <a href="#">Entrez Gene 50933 Mouse</a> <a href="#">Entrez Gene 498560 Rat</a> <a href="#">Entrez Gene 7347 Human</a> <a href="#">P15374</a>
Synonyms:	UCH-L3
Protein Families:	Druggable Genome, Protease



[View online »](#)

**Product images:**

Anti-UCHL3 antibody IHC of human testis. Immunohistochemistry of formalin-fixed, paraffin-embedded tissue after heat-induced antigen retrieval.