

Product datasheet for **TA341106**

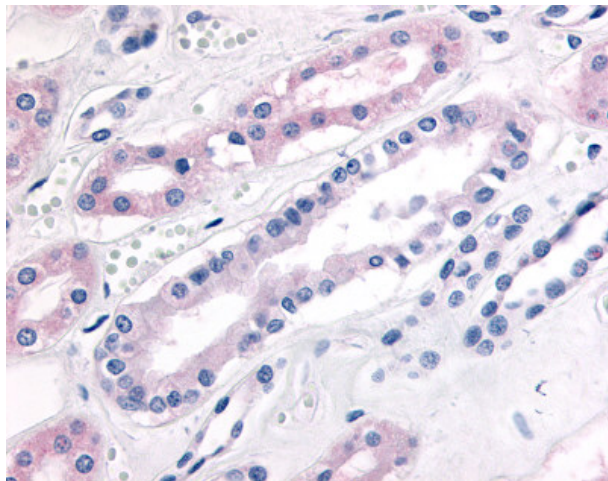
PDE2A Rabbit Polyclonal Antibody

Product data:

Product Type:	Primary Antibodies
Applications:	IHC
Recommended Dilution:	IHC-P (20 µg/ml)
Reactivity:	Human (Predicted: Monkey, Mouse, Rat, Bovine, Rabbit)
Host:	Rabbit
Clonality:	Polyclonal
Immunogen:	Pde2 / PDE2A antibody was raised against synthetic 17 amino acid peptide from N-terminus of human PDE2A. Percent identity with other species by BLAST analysis: Human, Gorilla, Marmoset, Dog, Panda, Horse (100%); Gibbon, Monkey, Mouse, Rat, Bovine, Elephant, Rabbit (94%); Pig (88%).
Formulation:	PBS, 0.1% sodium azide.
Concentration:	lot specific
Purification:	Immunoaffinity purified
Conjugation:	Unconjugated
Storage:	Store at -20°C as received.
Stability:	Stable for 12 months from date of receipt.
Gene Name:	phosphodiesterase 2A
Database Link:	NP_002590 Entrez Gene 81743 Rat Entrez Gene 207728 Mouse Entrez Gene 718479 Monkey Entrez Gene 5138 Human O00408
Synonyms:	CGS-PDE; cGSPDE; PDE2A1; PED2A4
Protein Families:	Druggable Genome
Protein Pathways:	Progesterone-mediated oocyte maturation, Purine metabolism



[View online »](#)

Product images:

Anti-PDE2A antibody IHC of human kidney.
Immunohistochemistry of formalin-fixed,
paraffin-embedded tissue after heat-induced
antigen retrieval.