

Product datasheet for **TA341105**

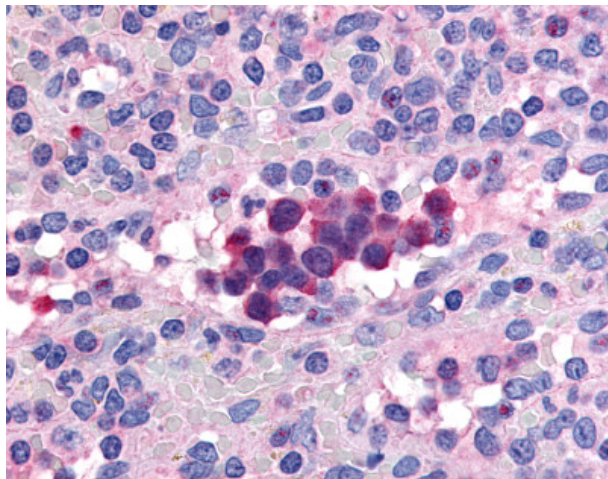
PDE9A Rabbit Polyclonal Antibody

Product data:

Product Type:	Primary Antibodies
Applications:	IHC
Recommended Dilution:	IHC-P (20 µg/ml)
Reactivity:	Human (Predicted: Mouse, Bat, Bovine, Pig, Chicken)
Host:	Rabbit
Clonality:	Polyclonal
Immunogen:	PDE9A antibody was raised against synthetic 17 amino acid peptide from internal region of human PDE9A. Percent identity with other species by BLAST analysis: Human, Gibbon, Monkey, Marmoset, Dog (100%); Gorilla, Mouse, Bat, Bovine, Panda, Pig, Turkey, Chicken (94%); Rat (88%); Elephant, Platypus, Lizard (82%).
Formulation:	PBS, 0.1% sodium azide.
Concentration:	lot specific
Purification:	Immunoaffinity purified
Conjugation:	Unconjugated
Storage:	Store at -20°C as received.
Stability:	Stable for 12 months from date of receipt.
Gene Name:	phosphodiesterase 9A
Database Link:	NP_002597 Entrez Gene 18585 Mouse Entrez Gene 5152 Human O76083
Synonyms:	HSPDE9A2
Protein Families:	Druggable Genome
Protein Pathways:	Progesterone-mediated oocyte maturation, Purine metabolism



[View online »](#)

Product images:

Anti-PDE9A antibody IHC of human spleen. Immunohistochemistry of formalin-fixed, paraffin-embedded tissue after heat-induced antigen retrieval.