

Product datasheet for **TA341102**

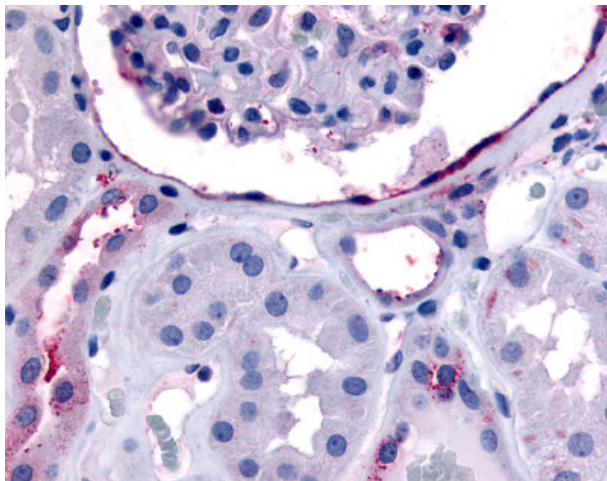
ErbB 4 (ERBB4) Rabbit Polyclonal Antibody

Product data:

Product Type:	Primary Antibodies
Applications:	IHC
Recommended Dilution:	IHC-P (30 µg/ml)
Reactivity:	Human (Predicted: Mouse, Rat, Bovine, Dog, Hamster, Horse, Pig)
Host:	Rabbit
Clonality:	Polyclonal
Immunogen:	ERBB4 / HER4 antibody was raised against synthetic 15 amino acid peptide from C-terminus of human ERBB4. Percent identity with other species by BLAST analysis: Human, Gorilla, Gibbon, Monkey, Marmoset (100%); Mouse, Rat, Dog, Bovine, Hamster, Panda, Horse, Pig, Platypus (93%); Bat, Opossum (87%); Turkey, Chicken (80%).
Formulation:	PBS, 0.1% sodium azide.
Concentration:	lot specific
Purification:	Immunoaffinity purified
Conjugation:	Unconjugated
Storage:	Store at -20°C as received.
Stability:	Stable for 12 months from date of receipt.
Gene Name:	erb-b2 receptor tyrosine kinase 4
Database Link:	NP_005226 Entrez Gene 13869 Mouse Entrez Gene 59323 Rat Entrez Gene 488508 Dog Entrez Gene 2066 Human Q15303
Synonyms:	ALS19; HER4; p180erbB4
Protein Families:	Druggable Genome, Protein Kinase, Transmembrane
Protein Pathways:	Calcium signaling pathway, Endocytosis, ErbB signaling pathway



[View online »](#)

Product images:

Anti-ERBB4 antibody IHC of human glomerulus and renal tubular epithelium in cortex. Immunohistochemistry of formalin-fixed, paraffin-embedded tissue after heat-induced antigen retrieval.